

# Word of the Day

## Spring Term 2024

### Week 36 – 17th June 2024



### This Week's Words

**Grasshopper**

tear  
office  
spare  
chipped  
lift

**Shinobi**

tolerate  
mutter  
fixation  
unveil

**VN VOCABULARY**

### Grasshopper Word of the Day

**Word of the Day:** picnic  
*(pic-nic)*

**Word Class:** (verb / noun)

**Definition:** If you tear paper, cloth, or another material, or if it tears, you pull it into two pieces or you pull it so that a hole appears in it.

**Phrases:**

**Synonym:** word  
word

**Antonym:** word  
word

**Rhyme:** word  
word

**Link Word:** word  
word

**Phrase Number One:** The was a hole in Freddie's new school picnic.

**Phrase Number Two:**

**Illustration:** A picnic basket with a red apple and a sandwich.

### Shinobi Word of the Day

**Word of the Day:** tear  
*(tear)*

**Word Class:** (verb / noun)

**Definition:** If you tear paper, cloth, or another material, or if it tears, you pull it into two pieces or you pull it so that a hole appears in it.

**Phrases:**

**Synonym:** word  
word

**Antonym:** word  
word

**Prefix / Suffix:** word  
word

**Link Word:** word  
word

**Phrase Number One:** The was a tear in Freddie's new school book.

**Phrase Number Two:**

**Illustration:** An open book with a tear in the paper.

**'Words unlock the doors to a world of understanding...'**

# **This Week's Words**

## **Grasshopper**

**feast**

**half**

**invite**

**match**

**pair**

## **Shinobi**

**feeble**

**gradual**

**inept**

**mingle**

**ruin**



**VOCABULARY NINJA**

# Grasshopper (Tier 1)

**feast**

**half**

**invite**

**match**

**pair**



**VOCABULARY NINJA**

# Shinobi (Tier 2)

**feeble**

**gradual**

**inept**

**mingle**

**ruin**



**VOCABULARY NINJA**



# Grasshopper Word of the Day

Word of the Day:

Pronunciation / Syllables

feast  
(*feast*)

Word Class  
(noun)

Definition:

A feast is a large and special meal.



The class ate a **feast** of sweets on the last day of school.

Synonym:

dinner

festival

Antonym:

Prefix / Suffix:

-s

-ing

Rhyme:

least

east

Link Word:

big

meat



# Grasshopper Word of the Day

Word of the Day:

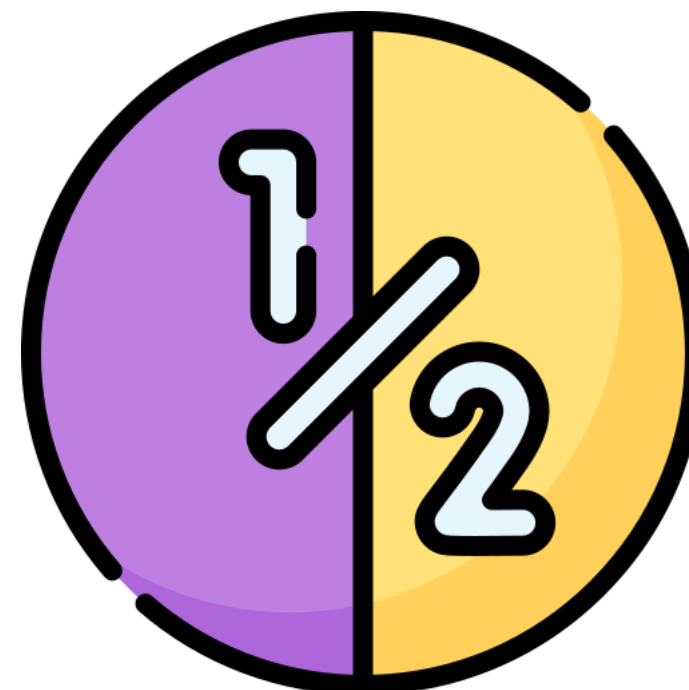
Pronunciation / Syllables

half  
(half)

Word Class  
(adverb)

Definition:

You use half to say that something is only partly the case or happens to only a limited extent.



The class looked **half** empty as so many children were off ill.

Synonym:

partly

Antonym:

unlimited

Prefix / Suffix:

be-

-s

Rhyme:

laugh

calf

Link Word:

measure

closed



# Grasshopper Word of the Day

Word of the Day:

Pronunciation / Syllables

invite  
(in-vite)

Word Class  
(verb / noun)

Definition:

If you invite someone to something such as a party or a meal, you ask them to come to it.



Mrs James **invited** Hannah to read her story to the class.

Synonym:

call

insist

Antonym:

ignore

discourage

Prefix / Suffix:

-ed

-s

Rhyme:

right

light

Link Word:

party

accompany





# Grasshopper Word of the Day

Word of the Day:

Pronunciation / Syllables

match  
(*match*)

Word Class  
(verb / noun)

## Definition:

If something of a particular colour or design matches another thing, they have the same colour or design, or have a pleasing appearance when they are used together.



The answers needed to **match** those in the book.

Synonym:

pair

duet

Antonym:

division

separation

Prefix / Suffix:

mis-

-ing

Rhyme:

catch

batch

Link Word:

exactly

miles





# Grasshopper Word of the Day

Word of the Day:

Pronunciation / Syllables

pair  
(*pair*)

Word Class  
(noun / verb)

## Definition:

A pair of things are two things of the same size and shape that are used together or are both part of something, for example shoes, earrings, or parts of the body.



The class were asked to work in **pairs** for the lesson.

Synonym:

couple

duo

Antonym:

one

single

Prefix / Suffix:

re-

-ed

Rhyme:

there

where

Link Word:

socks

hands



# Shinobi Word of the Day

Word of the Day:

Pronunciation / Syllables

feeble  
(fee-ble)

Word Class  
(adjective)

Definition:

If you describe someone or something as feeble, you mean that they are weak.



Mr Hampton explained the plant's **feeble** growth.

Synonym:

frail

incompetent

Antonym:

strong

competent

Prefix / Suffix:

-ness

-r

Rhyme:

Link Word:

light

old



# Shinobi Word of the Day

Word of the Day:

Pronunciation / Syllables

gradual  
(grad-u-al)

Word Class  
(adjective)

## Definition:

A gradual change or process occurs in small stages over a long period of time, rather than suddenly.



There was a **gradual** change in the weather.

Synonym:

continuous

steady

Antonym:

discontinuous

intermittent

Prefix / Suffix:

-ly

-ist

Rhyme:

Link Word:

process

progress



# Shinobi Word of the Day

Word of the Day:

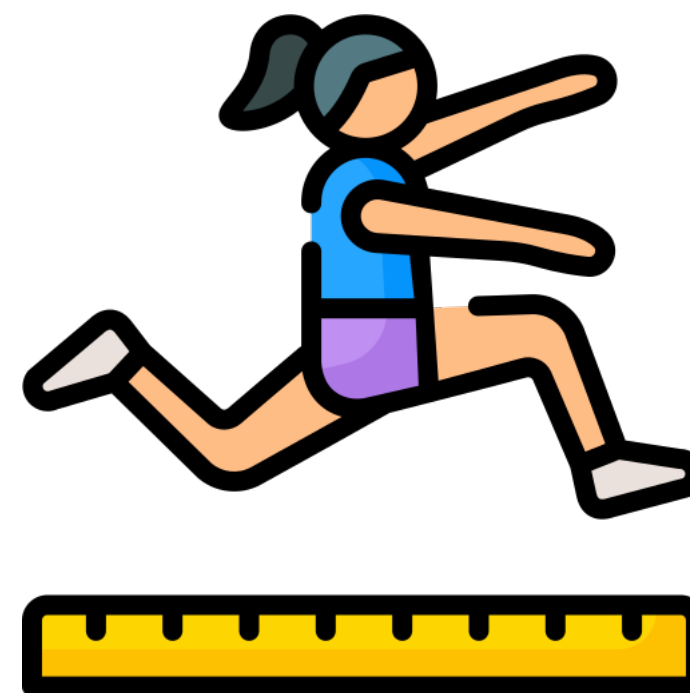
Pronunciation / Syllables

inept  
(*in-ept*)

Word Class  
(adjective)

Definition:

If you say that someone is inept, you are criticising them because they do something with a complete lack of skill.



Aarna felt **inept** at the long jump during PE.

Synonym:

bumbling

inefficient

Antonym:

able

expert

Prefix / Suffix

-ness

-ly

Rhyme:

accept

kept

Link Word:

lack

completely



# Shinobi Word of the Day

Word of the Day:

Pronunciation / Syllables

mingle  
(min-*gle*)

Word Class  
(verb)

Definition:

If you mingle with the other people there, you move around and talk to them.



The class were encouraged to **mingle** with each other.

Synonym:

blend

mix

Antonym:

divide

separate

Prefix / Suffix:

inter-

-ed

Rhyme:

single

jingle

Link Word:

around

stretched



# Shinobi Word of the Day

Word of the Day:

Pronunciation / Syllables

ruin  
(*ru-in*)

Word Class  
(verb / noun)

Definition:

To ruin something means to severely harm, damage, or spoil it.



The rain **ruined** outside play.

Synonym:

demolish

wreck

Antonym:

build

construct

Prefix / Suffix:

-ing

-ed

Rhyme:

Link Word:

crops

health

# Vocabulary Laboratory



Describe / Definition:

Use it in a sentence:

**Focus Word** (write below):

**Word Class:**

**Synonyms:**

(words with same / similar meaning)

**Antonyms:**

(words with opposite meaning)

**Draw your sentence:**

**Rhymes:**

(words that sound the same)

**Link Words:**

(Example: football = pitch, team, player)



# Vocabulary Visualiser

Draw the  
**Grasshopper** words  
and bring them to life.



Word: feast

Word: match

Word: half

Word: pair



# Vocabulary Visualiser

Draw the **Shinobi**  
words and bring  
them to life.



Word: feeble

Word: mingle

Word: gradual

Word: ruin



# Matching Meanings

Draw lines from the **Grasshopper** words to their definitions.



## Grasshopper Word

## Grasshopper Definitions

feast

If you \*\*\* someone to something such as a party or a meal, you ask them to come to it.



half

A \*\*\* is a large and special meal.



invite

If something of a particular colour or design \*\*\* another thing, they have the same colour or design, or have a pleasing appearance when they are used together.



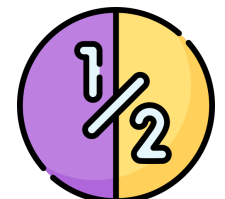
match

A \*\*\* of things are two things of the same size and shape that are used together or are both part of something, for example shoes, earrings, or parts of the body.



pair

You use \*\*\* to say that something is only partly the case or happens to only a limited extent.



# Matching Meanings

Draw lines from the **Shinobi** words to their definitions.



## Shinobi Word

## Shinobi Definitions

feeble

A \*\*\* change or process occurs in small stages over a long period of time, rather than suddenly.



gradual

To \*\*\* something means to severely harm, damage, or spoil it.



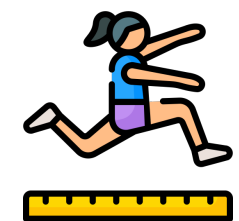
inept

If you \*\*\* with the other people there, you move around and talk to them.



minge

If you say that someone is \*\*\*, you are criticising them because they do something with a complete lack of skill.



ruin

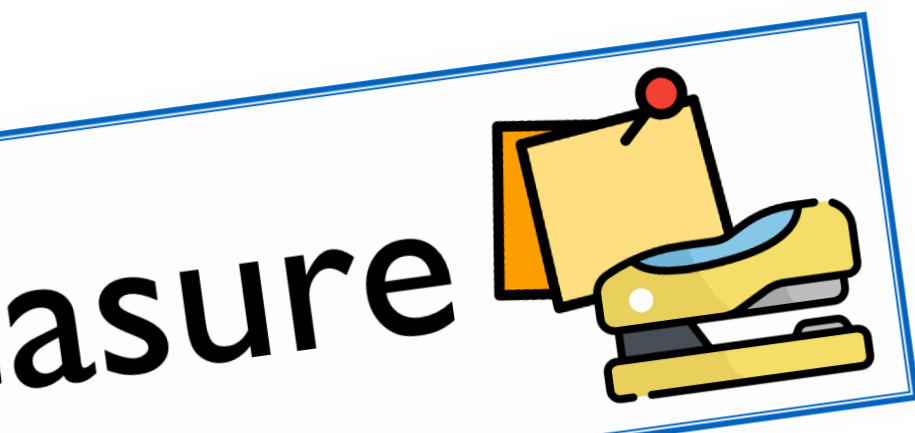
If you describe someone or something as \*\*\*, you mean that they are weak.





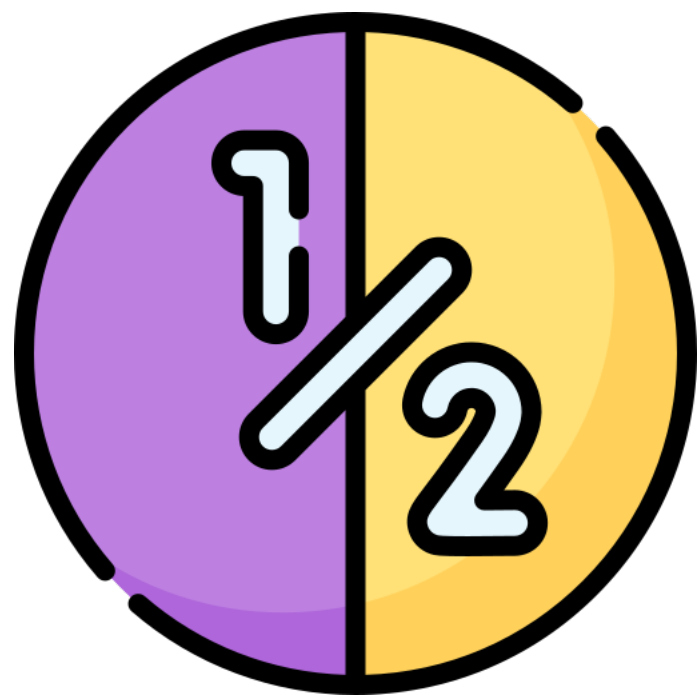
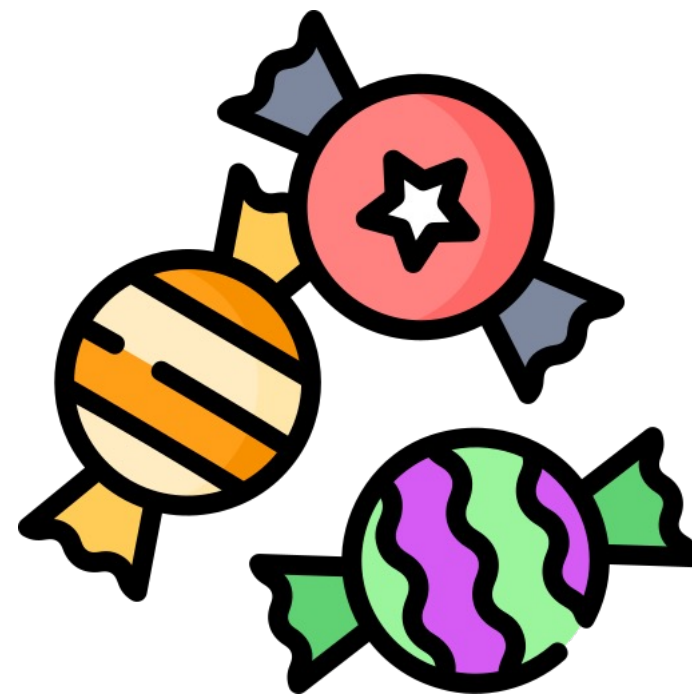
# Display Slips

The following slides are for classroom display. As you teach each Word of the Day, words can be displayed in the classroom to enable pupils to use the taught vocabulary in an independent manner.





# feast



# half





invite



match







# pair

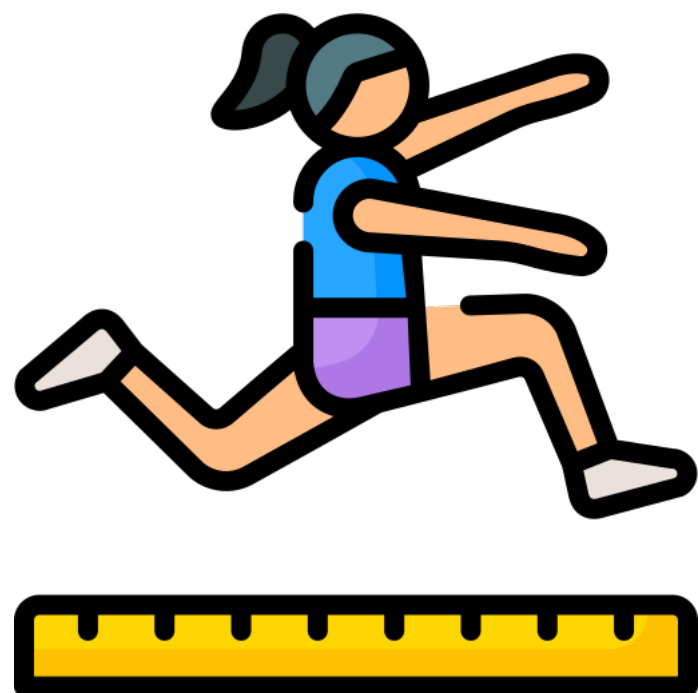


# feeble





gradual



inept





# mingle



# ruin





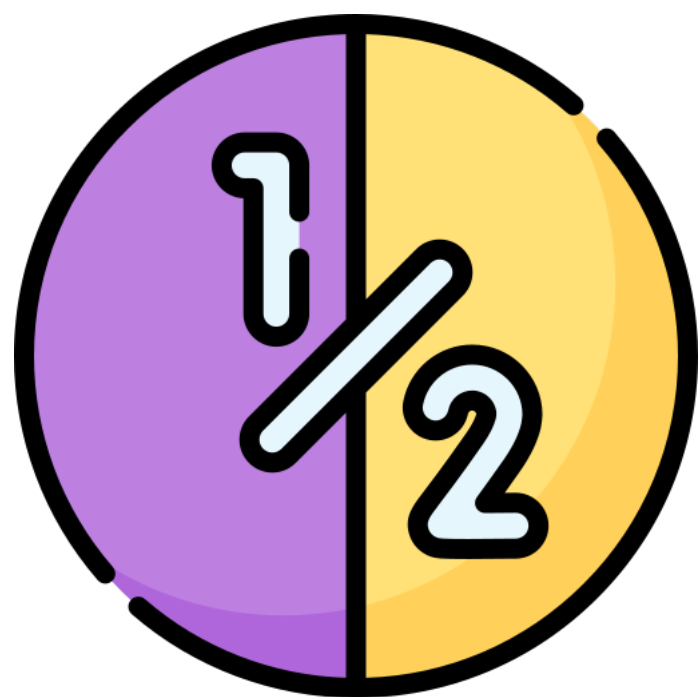
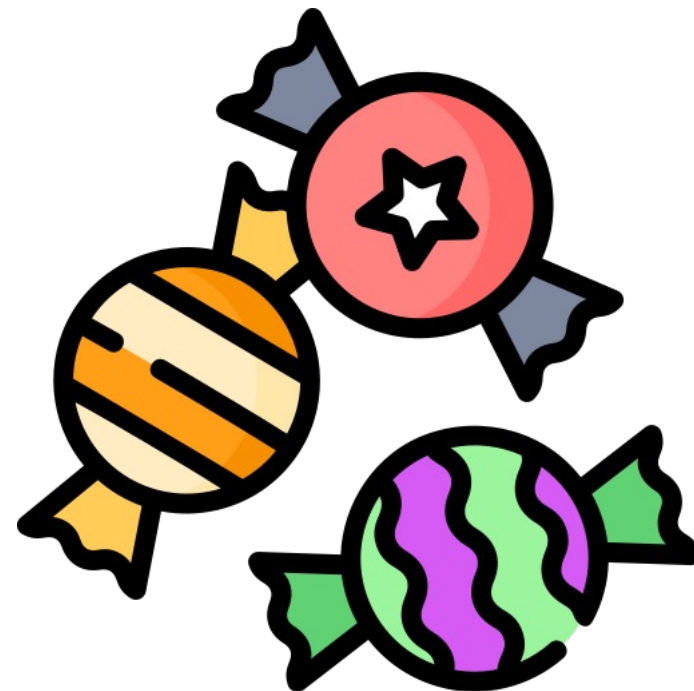
# Font Variation

The following display slips contain the same words, but have a more regular font, which have a more regular formation of 'a' and 'g'. Futura is the name of the font.





feast



half





invite



match





pair



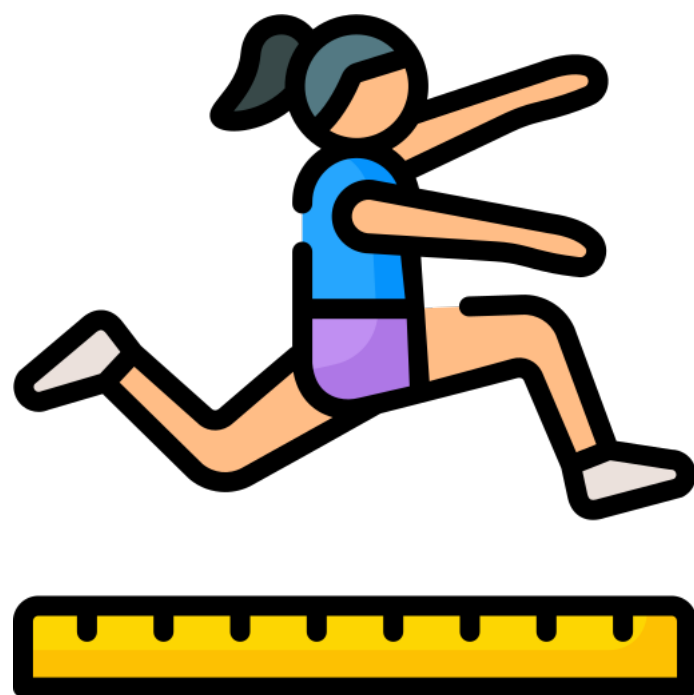
feeble







gradual



inept





# mingle



# ruin

