

Word of the Day

Spring Term 2024

Week 23 – 26th February 2024



This Week's Words

Grasshopper

tear
office
spare
chipped
lift

Shinobi

tolerate
mutter
fixation
unveil

VN VOCABULARY

Grasshopper Word of the Day

Word of the Day: picnic
(pic-nic)

Word Class: (verb / noun)

Definition: If you tear paper, cloth, or another material, or if it tears, you pull it into two pieces or you pull it so that a hole appears in it.

Phrases:

Synonym: word
word

Antonym: word
word

Rhyme: word
word

Link Word: word
word

Phrase Number One: The was a hole in Freddie's new school picnic.

Phrase Number Two:

Shinobi Word of the Day

Word of the Day: tear
(tear)

Word Class: (verb / noun)

Definition: If you tear paper, cloth, or another material, or if it tears, you pull it into two pieces or you pull it so that a hole appears in it.

Phrases:

Synonym: word
word

Antonym: word
word

Prefix / Suffix: word
word

Link Word: word
word

Phrase Number One: The was a tear in Freddie's new school book.

Phrase Number Two:

'Words unlock the doors to a world of understanding...'

This Week's Words

Grasshopper

after

cancel

cover

dodge

fear

Shinobi

admire

bewitch

decision

eloquent

engulf



VOCABULARY NINJA

Grasshopper (Tier 1)

after

cancel

cover

dodge

fear



VOCABULARY NINJA

Shinobi (Tier 2)

admire

bewitch

decision

eloquent

engulf



VOCABULARY NINJA



Grasshopper Word of the Day

Word of the Day:

Pronunciation / Syllables

after
(af-ter)

Word Class
(preposition)

Definition:

If something happens after a particular date or event, it happens during the period of time that follows that date or event.



Ken walked into the classroom **after** Brenda.

Synonym:

succeeding

behind

Antonym:

before

preceding

Prefix / Suffix:

-wards

Rhyme:

crafter

Link Word:

breakfast

lunch



Grasshopper Word of the Day

Word of the Day:

Pronunciation / Syllables

cancel
(*can-cel*)

Word Class
(verb)

Definition:

If you cancel something that has been arranged, you stop it from happening.



Mrs Sandler **cancelled** the spelling test.

Synonym:

scrap

drop

Antonym:

Prefix / Suffix:

-lation

-ed

Rhyme:

Link Word:

visit

meeting



Grasshopper Word of the Day

Word of the Day:

Pronunciation / Syllables

cover
(cov-er)

Word Class
(verb / noun)

Definition:

If you cover something, you place something else over it in order to protect it, hide it, or close it.



Rachel **covered** her picture in glitter.

Synonym:

protect

shield

Antonym:

reveal

Prefix / Suffix:

re-

-age

Rhyme:

discover

recover

Link Word:

face

table



Grasshopper Word of the Day

Word of the Day:

Pronunciation / Syllables

dodge
(*dodge*)

Word Class
(verb)

Definition:

If you dodge, you move suddenly, often to avoid being hit, caught, or seen.



Prisha **dodged** the ball that was kicked in the air.

Synonym:

bolt

duck

Antonym:

Prefix / Suffix:

-ed

-ing

Rhyme:

lodge

Link Word:

crowd

car



Grasshopper Word of the Day

Word of the Day:

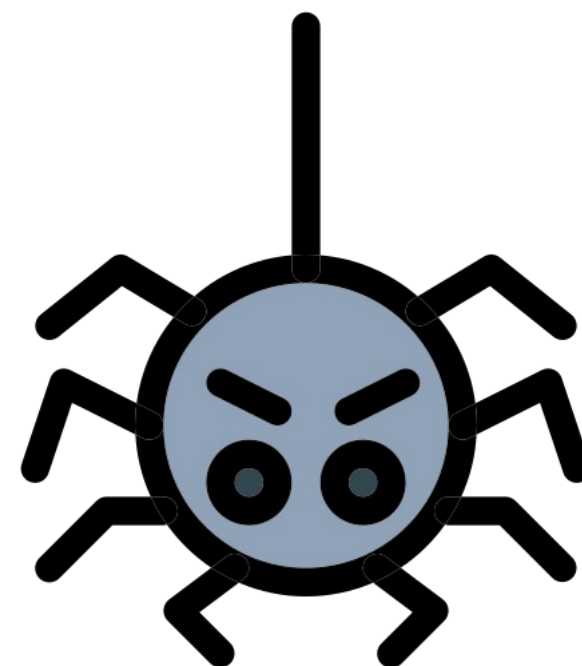
Pronunciation / Syllables

fear
(fear)

Word Class
(noun / verb)

Definition:

Fear is the unpleasant feeling you have when you think that you are in danger.



Gregory had a **fear** of the spider in the classroom.

Synonym:

terror

fright

Antonym:

calmness

confidence

Prefix / Suffix:

-ful

-ed

Rhyme:

hear

year

Link Word:

shivering

heights



Shinobi Word of the Day

Word of the Day:

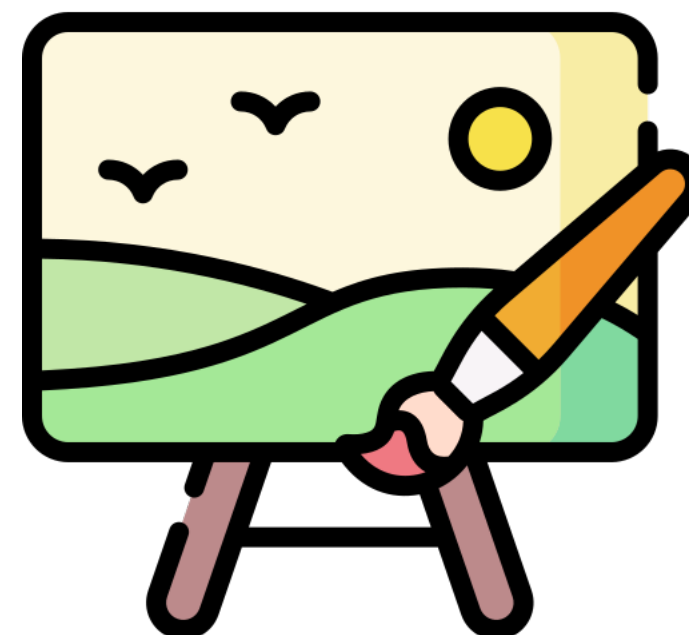
admire
(*ad-mire*)

Word Class
(verb)

Pronunciation / Syllables

Definition:

If you admire someone or something, you like and respect them very much.



Haima **admired** Lee's painting.

Synonym:

applaud
praise

Antonym:

disapprove of
loathe

Prefix / Suffix:

-ed
-ation

Rhyme:

fire
wire

Link Word:

her
view



Shinobi Word of the Day

Word of the Day:

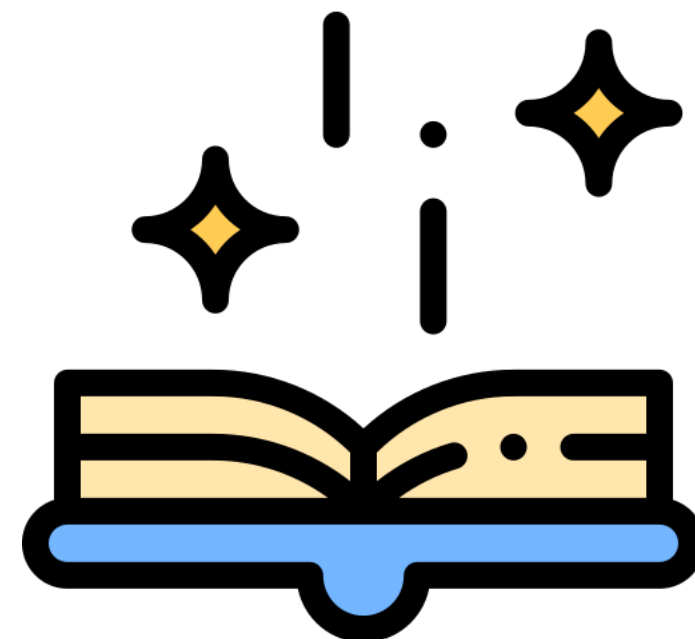
bewitch
(be-witch)

Word Class
(verb)

Pronunciation / Syllables

Definition:

If someone or something bewitches you, you are so attracted to them that you cannot think about anything else.



Carol was **bewitched** by the story read in class.

Synonym:

captivate

enchant

Antonym:

repel

Prefix / Suffix:

-ed

-ing

Rhyme:

pitch

switch

Link Word:

him

her



Shinobi Word of the Day

Word of the Day:

Pronunciation / Syllables

decision
(de-ci-sion)

Word Class
(noun)

Definition:

When you make a decision,
you choose what should be done or
which is the best of
various possible actions.



Richard made the **decision** to do his homework.

Synonym:

resolution

conclusion

Antonym:

Prefix / Suffix

in-

-s

Rhyme:

division

revision

Link Word:

taken

wrong



Shinobi Word of the Day

Word of the Day:

eloquent
(el-o-quent)

Word Class
(adjective)

Pronunciation / Syllables

Definition:

Speech or writing that is eloquent is well expressed and effective in persuading people.



Tabu was very **eloquent** when reading her poem.

Synonym:

persuasive

expressive

Antonym:

inarticulate

Prefix / Suffix:

-ly

Rhyme:

Link Word:

speech

spoke



Shinobi Word of the Day

Word of the Day:

Pronunciation / Syllables

engulf
(en-gulf)

Word Class
(verb)

Definition:

If one thing engulfs another, it completely covers or hides it, often in a sudden and unexpected way.



The class were **engulfed** in lots of facts about cities.

Synonym:

flood

swamp

Antonym:

Prefix / Suffix:

-ed

-ing

Rhyme:

Link Word:

flames

feeling

Vocabulary Laboratory



Describe / Definition:

Use it in a sentence:

Focus Word (write below):

Word Class:

Synonyms:

(words with same / similar meaning)

Antonyms:

(words with opposite meaning)

Draw your sentence:

Rhymes:

(words that sound the same)

Link Words:

(Example: football = pitch, team, player)

Vocabulary Visualiser

Draw the
Grasshopper words
and bring them to life.



Word: after

Word: cover

Word: cancel

Word: fear



Vocabulary Visualiser

Draw the **Shinobi**
words and bring
them to life.



Word: admire

Word: eloquent

Word: decision

Word: engulf



Matching Meanings

Draw lines from the **Grasshopper** words to their definitions.



Grasshopper Word

Grasshopper Definitions

after

If you *** something that has been arranged, you stop it from happening.



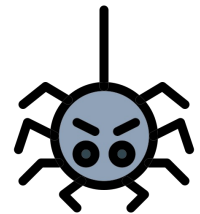
cancel

If something happens *** a particular date or event, it happens during the period of time that follows that date or event.



cover

*** is the unpleasant feeling you have when you think that you are in danger.



dodge

If you ***, you move suddenly, often to avoid being hit, caught, or seen.



fear

If you *** something, you place something else over it in order to protect it, hide it, or close it.



Matching Meanings

Draw lines from the **Shinobi** words to their definitions.



Shinobi Word

Shinobi Definitions

admire

When you make a ***, you choose what should be done or which is the best of various possible actions.



bewitch

Speech or writing that is *** is well expressed and effective in persuading people.



decision

If one thing *** another, it completely covers or hides it, often in a sudden and unexpected way.



eloquent

If someone or something *** you, you are so attracted to them that you cannot think about anything else.



engulf

If you *** someone or something, you like and respect them very much.





Display Slips

The following slides are for classroom display. As you teach each Word of the Day, words can be displayed in the classroom to enable pupils to use the taught vocabulary in an independent manner.





after



cancel





cover

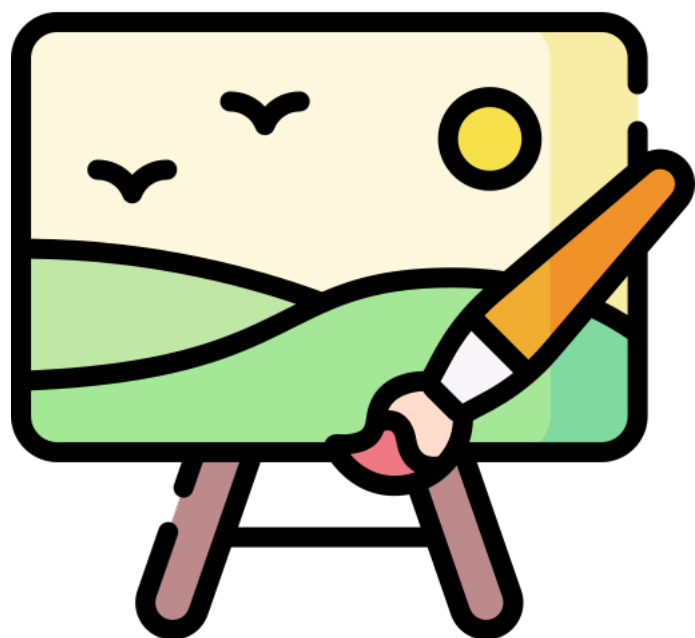
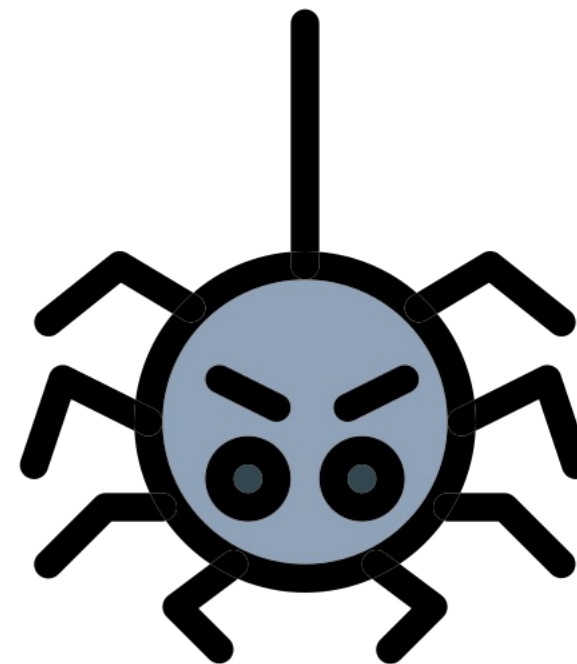


dodge





fear

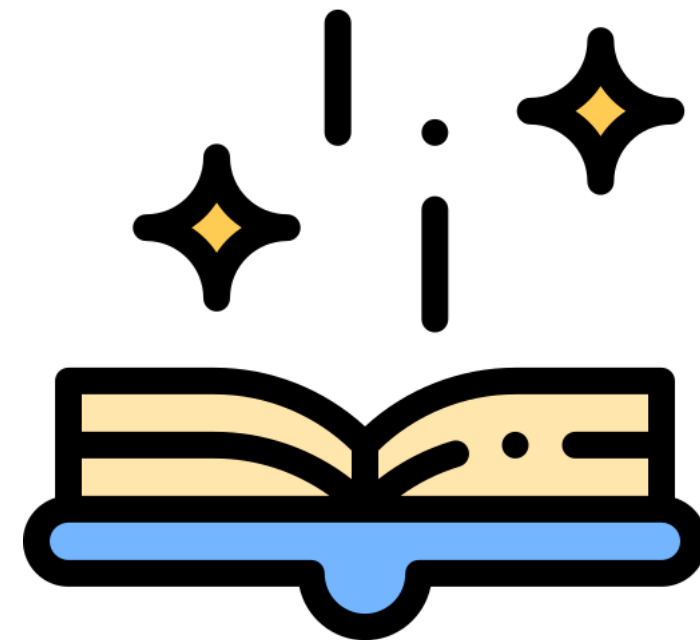


admire





bewitch

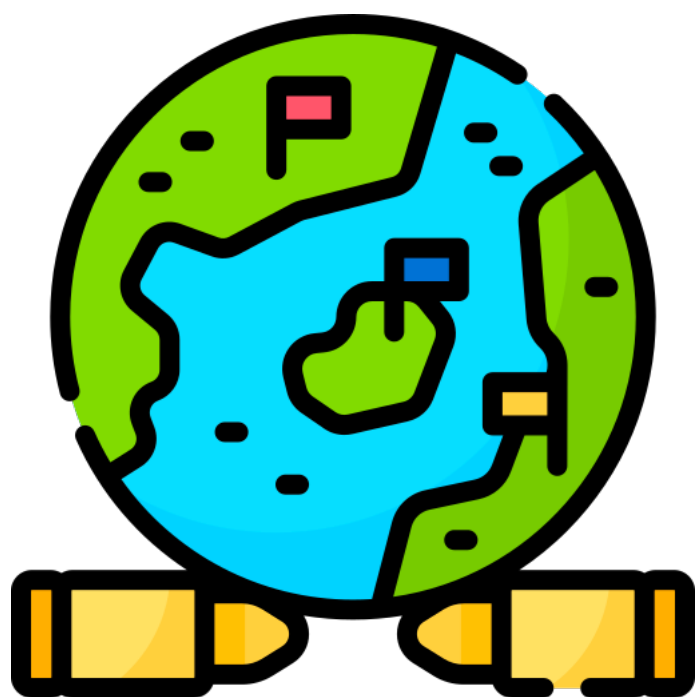


decision





eloquent



engulf





Font Variation

The following display slips contain the same words, but have a more regular font, which have a more regular formation of 'a' and 'g'. Futura is the name of the font.




worried



opini

asure



dia





after



cancel





cover

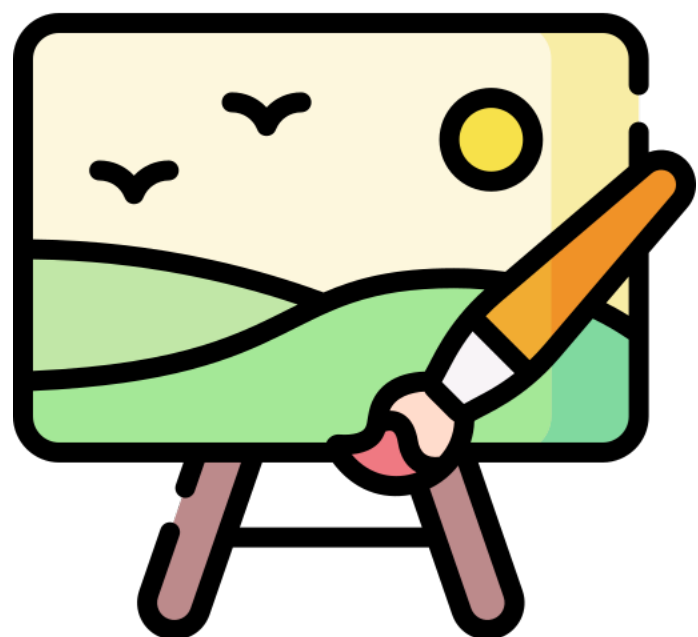
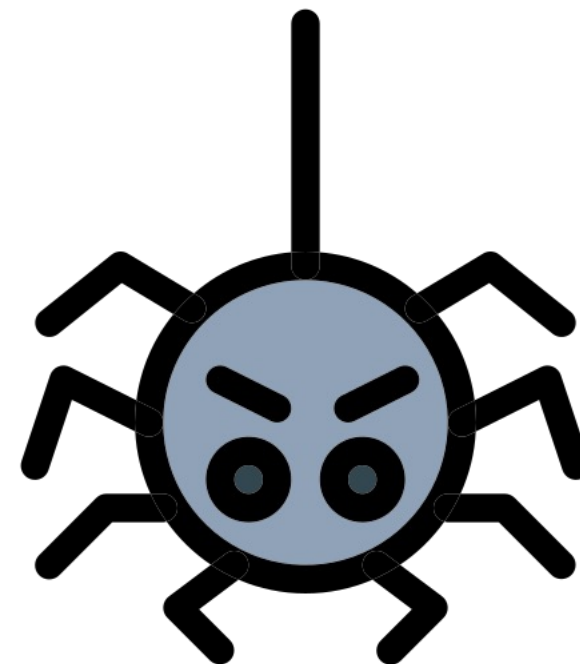


dodge





fear

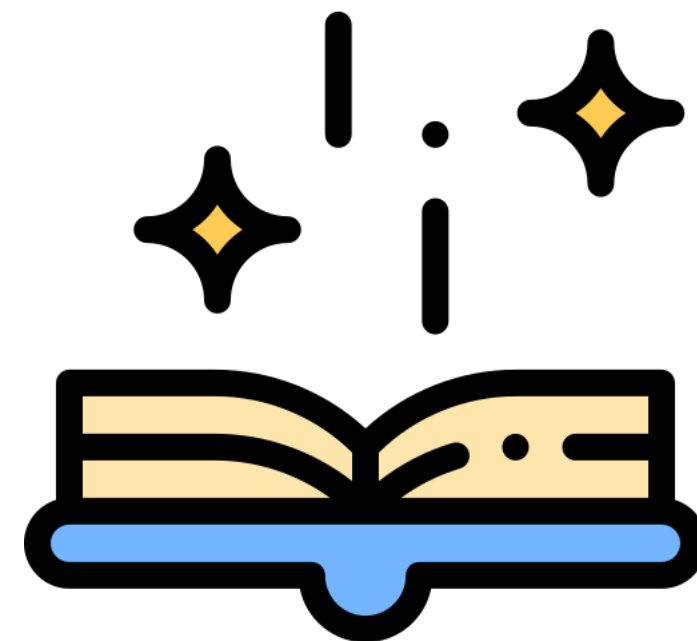


admire





bewitch



decision





eloquent



engulf

