

Word of the Day

Autumn Term 2023

Week 16 – 18th December 2023



This Week's Words

Grasshopper

tear
office
spare
chipped
lift

Shinobi

tolerate
mutter
fixation
unveil

VN VOCABULARY

Grasshopper Word of the Day

Word of the Day: picnic
(pic-nic)

Word Class: (verb / noun)

Definition: If you tear paper, cloth, or another material, or if it tears, you pull it into two pieces or you pull it so that a hole appears in it.

Phrases:

Synonym: word
word

Antonym: word
word

Rhyme: word
word

Link Word: word
word

Phrase Number One: The was a hole in Freddie's new school picnic.

Phrase Number Two:

Shinobi Word of the Day

Word of the Day: tear
(tear)

Word Class: (verb / noun)

Definition: If you tear paper, cloth, or another material, or if it tears, you pull it into two pieces or you pull it so that a hole appears in it.

Phrases:

Synonym: word
word

Antonym: word
word

Prefix / Suffix: word
word

Link Word: word
word

Phrase Number One: The was a tear in Freddie's new school book.

Phrase Number Two:

'Words unlock the doors to a world of understanding...'

This Week's Words

Grasshopper

pie

wreath

carol

sleigh

pudding

Shinobi

charity

eve

reunion

shop

belong



VOCABULARY NINJA

Grasshopper (Tier 1)

pie

wreath

carol

sleigh

pudding



VOCABULARY NINJA

Shinobi (Tier 2)

charity

eve

reunion

shop

belong



VOCABULARY NINJA



Grasshopper Word of the Day

Word of the Day:

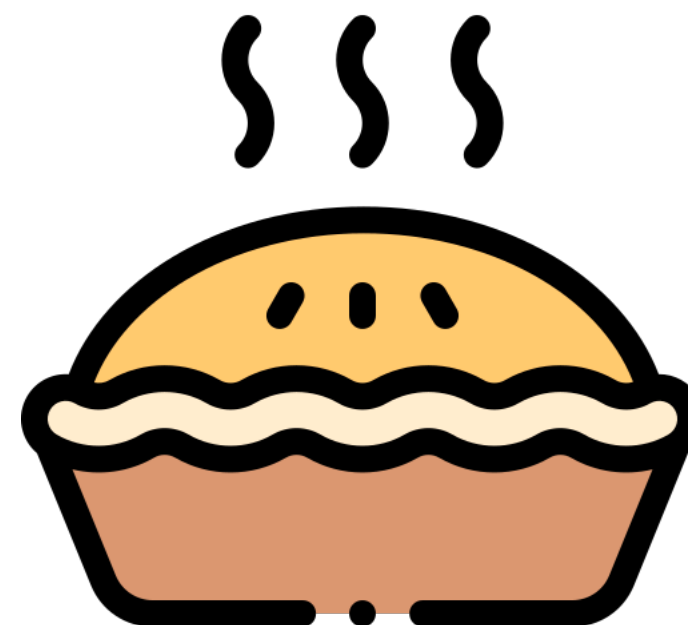
Pronunciation / Syllables

pie
(pie)

Word Class
(noun)

Definition:

A pie consists
of meat, vegetables, or fruit
baked in pastry.



Chicken **pie** was on the school lunch menu.

Synonym:

pastry

tart

Antonym:

Prefix / Suffix:

-s

Rhyme:

high

why

Link Word:

eat

warm



Grasshopper Word of the Day

Word of the Day:

Pronunciation / Syllables

wreath
(wreath)

Word Class
(noun)

Definition:

A wreath is a circle of leaves which some people hang on the front door of their house at Christmas.



Mrs Carr hung a Christmas **wreath** on the classroom door.

Synonym:

garland

chaplet

Antonym:

Prefix / Suffix:

-s

Rhyme:

teeth

beneath

Link Word:

door

hang



Grasshopper Word of the Day

Word of the Day:

Pronunciation / Syllables

carol
(*car-ol*)

Word Class
(noun/verb)

Definition:

Carols are Christian religious songs that are sung at Christmas.



The children sang **carols** in the Nativity.

Synonym:

hymn

psalm

Antonym:

Prefix / Suffix:

-ing

-s

Rhyme:

barrel

Link Word:

sing

loudly



Grasshopper Word of the Day

Word of the Day:

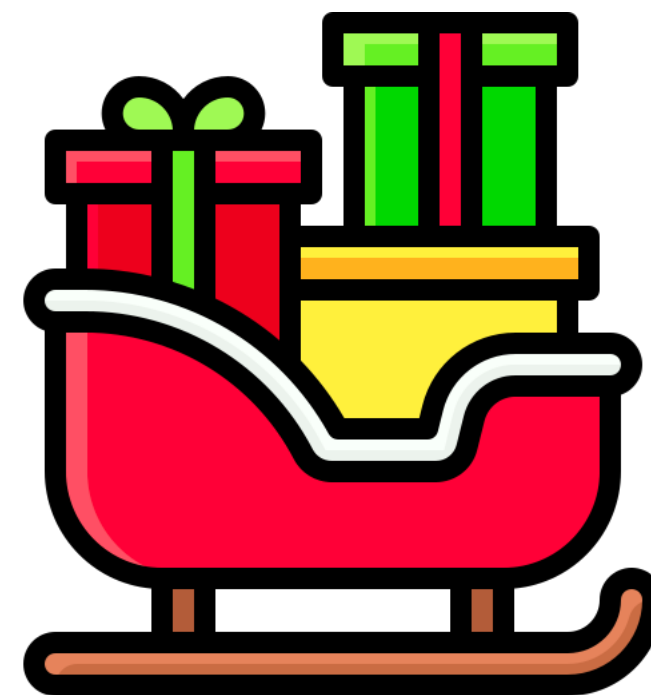
Pronunciation / Syllables

sleigh
(sleigh)

Word Class
(noun)

Definition:

A sleigh is a vehicle which can slide over snow. Sleighs are usually pulled by horses.



The children were hoping to see Santa's sleigh.

Synonym:

sledge

Antonym:

Prefix / Suffix:

Rhyme:

way

day

Link Word:

ride

snow



Grasshopper Word of the Day

Word of the Day:

Pronunciation / Syllables

pudding
(*pud-ding*)

Word Class
(noun)

Definition:

A pudding is a cooked sweet food made with flour, fat, and eggs, and usually served hot.



There was Christmas **pudding** on the menu.

Synonym:

dessert

sweet

Antonym:

Prefix / Suffix:

-s

Rhyme:

Link Word:

hot

tasty



Shinobi Word of the Day

Word of the Day:

Pronunciation / Syllables

charity
(chat-ty)

Word Class
(noun)

Definition:

Charity is kindness and understanding towards other people.



The school showed **charity** to the local foodbank.

Synonym:

aid
support

Antonym:

Prefix / Suffix:

-ties
-able

Rhyme:

clarity
parity

Link Word:

person
help



Shinobi Word of the Day

Word Class
(noun)

Word of the Day:

eve
(eve)

Pronunciation / Syllables

Definition:

The eve of a particular event or occasion is the day before it, or the period of time just before it.



It was the **eve** of the Christmas performance.

Synonym:

day before
night

Antonym:

day after

Prefix / Suffix:

Rhyme:

leave
sleeve

Link Word:

dark
cold



Shinobi Word of the Day

Word of the Day:

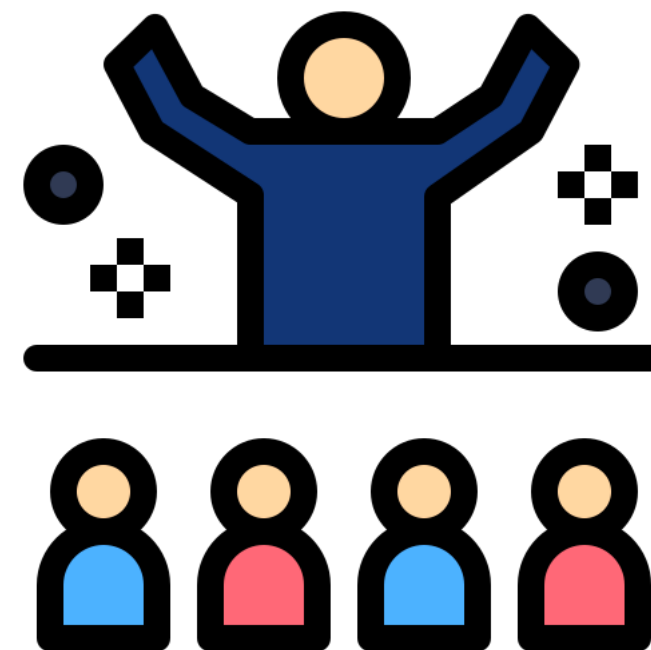
Pronunciation / Syllables

reunion
(re-un-ion)

Word Class
(noun)

Definition:

A reunion is a meeting between people who have been separated for some time.



Mr Laham had a **reunion** with his students after being away for a long time.

Synonym:

get-together

Antonym:

Prefix / Suffix

-s

Rhyme:

communion

Link Word:

party

happy



Shinobi Word of the Day

Word of the Day:

Pronunciation / Syllables

shop
(shop)

Word Class
(verb/noun)

Definition:

When you shop, you go to shops
and buy things.



Mrs Daves needed to **shop** for Christmas presents.

Synonym:

buy

purchase

Antonym:

Prefix / Suffix:

-ing

-ed

Rhyme:

top

stop

Link Word:

money

gifts



Shinobi Word of the Day

Word of the Day:

Pronunciation / Syllables

belong
(be-long)

Word Class
(verb)

Definition:

If something belongs to you, you own it.



Samantha **belonged** in Class 5.

Synonym:

fit in

be in

Antonym:

alienation

Prefix / Suffix:

-ing

-ed

Rhyme:

along

strong

Link Word:

group

family

Vocabulary Laboratory



Describe / Definition:

Use it in a sentence:

Focus Word (write below):

Word Class:

Synonyms:

(words with same / similar meaning)

Antonyms:

(words with opposite meaning)

Draw your sentence:

Rhymes:

(words that sound the same)

Link Words:

(Example: football = pitch, team, player)

Vocabulary Visualiser

Draw the
Grasshopper words
and bring them to life.



Word: pie

Word: sleigh

Word: wreath

Word: pudding



Vocabulary Visualiser

Draw the **Shinobi**
words and bring
them to life.



Word: charity

Word: shop

Word: eve

Word: belong



Matching Meanings

Draw lines from the **Grasshopper** words to their definitions.



Grasshopper Word

pie

wreath

carol

sleigh

pudding

Grasshopper Definitions

A *** is a circle of leaves which some people hang on the front door of their house at Christmas.

A *** is a vehicle which can slide over snow. *** are usually pulled by horses.

A *** consists of meat, vegetables, or fruit baked in pastry.

A *** is a cooked sweet food made with flour, fat, and eggs, and usually served hot.

*** are Christian religious songs that are sung at Christmas.



Matching Meanings

Draw lines from the
Shinobi words to
their definitions.



Shinobi Word

Shinobi Definitions

charity

A *** is a meeting between people who have been separated for some time.



eve

When you ***, you go to shops and buy things.



reunion

If something *** to you, you own it.



shop

*** is kindness and understanding towards other people.



belong

The *** of a particular event or occasion is the day before it, or the period of time just before it.





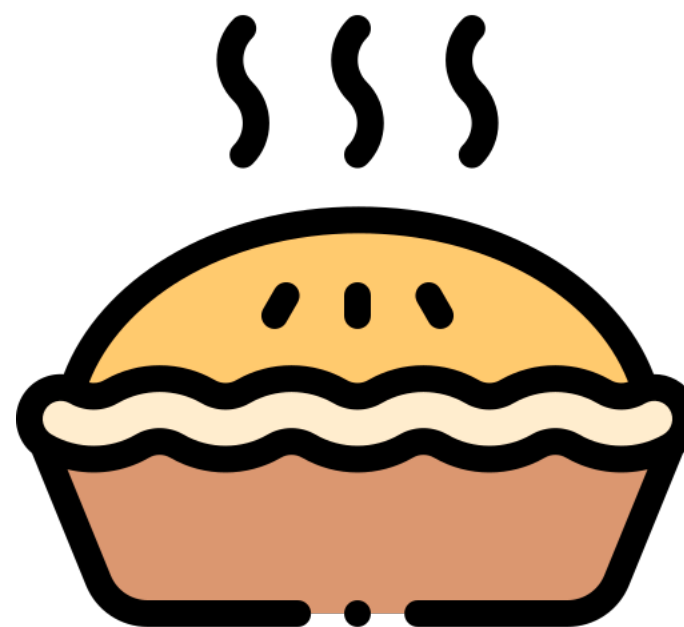
Display Slips

The following slides are for classroom display. As you teach each Word of the Day, words can be displayed in the classroom to enable pupils to use the taught vocabulary in an independent manner.





pie



wreath





carol



sleigh





pudding

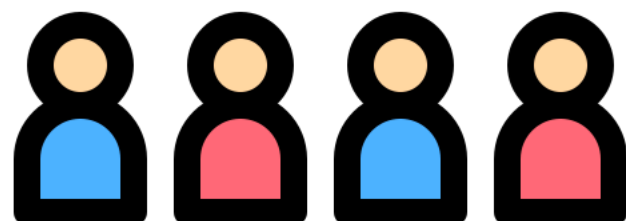


charity





eve



reunion





shop



belong





Font Variation

The following display slips contain the same words, but have a more regular font, which have a more regular formation of 'a' and 'g'. Futura is the name of the font.



worried



opini



asure

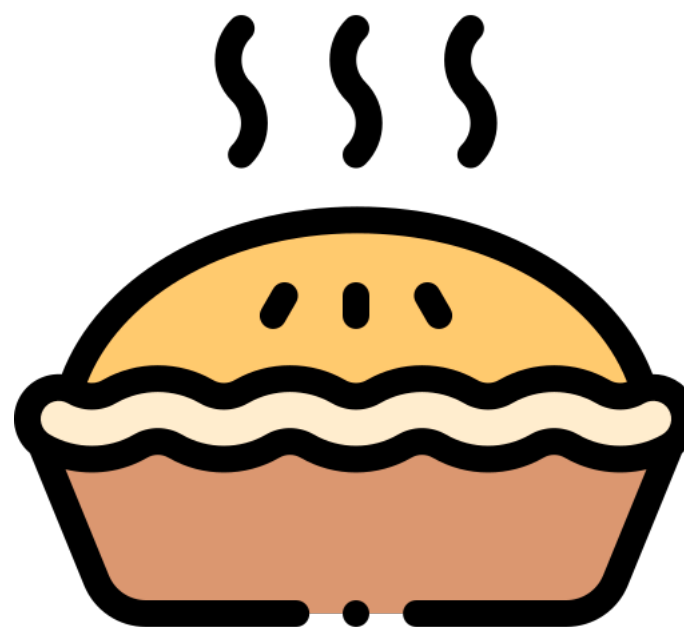


dia





pie



wreath





carol



sleigh





pudding

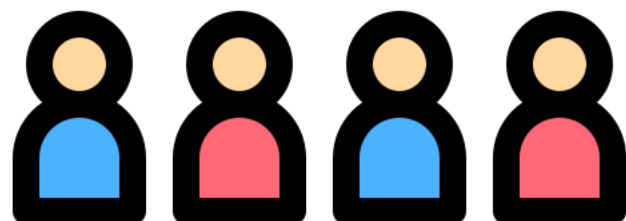


charity





eve



reunion





shop



belong

