

# VOCABULARY NINJA

## WHOLE SCHOOL SPELLING SYSTEM

Year 6

Autumn Term 2

Week 2



### Spelling Rule

Suffixes: –ant,  
–ance/–ancy, –ent, –  
ence/  
–ency

# WHOLE SCHOOL SPELLING SYSTEM

## INSTRUCTIONS FOR USING THIS PACK:

This pack contains everything you need to effectively teach, learn, practise and test a given spelling rule. The pack contains resources to send home at the beginning of the week, resources to display and use in the classroom, resources to send home, resources to play with and learn the spellings, and resources to test pupils knowledge of a spelling rule.

**Weekly Spelling Rule** - Page 3 and 4 introduce a spelling rule, gives a clear explanation of the rule and provides a spelling bank of up to 18 - 20 words where the spelling rule can be applied. This sheet should be used to introduce the spelling rule and then sent home to support parents at home.

**Look, Write, Cover and Check** - Pages 6, 7 and 8 are you classic look, cover, write and check spelling activities. This have been provided in many variations to help you keep spelling fresh and engaging in the class and at home. These resources can be printed.

**Printable Cards** - Pages 10-11 offer the spellings for the week as printable cards which can be used in the classroom or sent home for pupils to use as part of their learning of spellings at home. This sheet could also be trimmed along the line and then used as quick and simple flash cards.

**Display Words** - Pages 13-15 have each of the words from the spelling bank pre-populated so that you can quickly print the whole set of words and display them effectively within your classroom. This is a great resource and allows you to effectively and efficiently reference your spellings throughout the week.

**Weekly Test Resources** - Pages 18-21 has all of the resources you need to deliver the test at the end of the week including a variety of answer sheets and even differentiated lists of words to test pupils on which increase in difficulty.

**Certificates** – Pages 23 and 24 contains some really simple and slips that can be used to incentivise and reward pupils for their efforts and achievements.

**Additional Resources Section** – This section is standard in each pack and provides a multitude of different printable activities that you could give to pupils in your care. Each activity is simple to administer and helps keep the spelling routine in your class on a Tuesday, Wednesday an Thursday fresh and purposeful!

Suggested Weekly Spelling Routine	
Monday	Introduce and teach specific spelling rule. Send page 3 home and any other supporting resources. Display spellings in classroom
Tuesday	Spelling activity 5-15 minutes.
Wednesday	Spelling activity 5-15 minutes
Thursday	Spelling activity 5-15 minutes.
Friday	Test specific spelling rule with 10 questions from bank of 18



# Year 6 – Autumn Term 2 – Week 2

Insert  
school  
logo  
here

## Spelling Rule / Weekly Focus – Statutory Words 1-18

**Suffixes: –ant, –ance/–ancy, –ent, –ence/ –ency**

Use –ant and –ance/–ancy if there is a related word with a /æ/ or /eɪ/ sound in the right position; –ation endings are often a clue.

Use –ent and –ence/–ency after soft c (/s/ sound), soft g (/dʒ/ sound) and qu, or if there is a related word with a clear /ɛ/ sound in the right position.

There are many words, however, where the above guidance does not help. These words just have to be learn

observant

observance

expectant

hesitant

hesitancy

tolerant

tolerance

innocent

innocence

decent

decency

frequent

frequency

confident

confidence

assistant

assistance

obedient

# Year 6 – Autumn Term 2 – Week 2

Insert  
school  
logo  
here

## Spelling Rule / Weekly Focus – Statutory Words 1-20

**Suffixes: –ant, –ance/–ancy, –ent, –ence/ –ency**

Use –ant and –ance/–ancy if there is a related word with a /æ/ or /eɪ/ sound in the right position; –ation endings are often a clue.  
Use –ent and –ence/–ency after soft c (/s/ sound), soft g (/dʒ/ sound) and qu, or if there is a related word with a clear /ɛ/ sound in the right position.  
There are many words, however, where the above guidance does not help. These words just have to be learn

observant	observance	expectant	assistant
hesitant	hesitancy	tolerant	assistance
tolerance	innocent	innocence	obedient
decent	decency	frequent	independent
frequency	confident	confidence	independence

# WHOLE SCHOOL SPELLING SYSTEM

## LOOK, COVER, WRITE AND CHECK



Variations of the  
classic look, cover,  
write and check  
method of practising  
spellings.

Focus Word	Write 1	Write 2	Write 3
observant			
hesitant			
tolerance			
decent			
frequency			
observance			
hesitancy			
innocent			
decency			
confident			
expectant			
tolerant			
innocence			
frequent			
confidence			
assistant			
assistance			
obedient			

Focus Word	CAPITALS	Colours	BUBBLE WRITING
observant			
hesitant			
tolerance			
decent			
frequency			
observance			
hesitancy			
innocent			
decency			
confident			
expectant			
tolerant			
innocence			
frequent			
confidence			
assistant			
assistance			
obedient			

Focus Word	small	large	mixed
observant			
hesitant			
tolerance			
decent			
frequency			
observance			
hesitancy			
innocent			
decency			
confident			
expectant			
tolerant			
innocence			
frequent			
confidence			
assistant			
assistance			
obedient			

# WHOLE SCHOOL SPELLING SYSTEM

# PRINTABLE CARDS



All of this weeks  
spellings, ready to print  
to use as part of games  
in the classroom or  
send home.

**observant**

**hesitancy**

**hesitant**

**innocent**

**tolerance**

**decency**

**decent**

**confident**

**frequency**

**expectant**

**observance**

**tolerant**



**innocence**

**assistant**

**frequent**

**assistance**

**confidence**

**obedient**

**independence**

**independent**

# WHOLE SCHOOL SPELLING SYSTEM

# DISPLAY WORDS



All of this weeks  
spellings, ready to  
print, trim and display  
in your classroom.

**observant**

**hesitant**

**tolerance**

**decent**

**frequency**

**observance**

**hesitancy**

**innocent**

**decency**

**confident**

**expectant**

**tolerant**

**innocence**

**frequent**

**confidence**

**assistant**

**assistance**

**obedient**

**independent**

**independence**

# WHOLE SCHOOL SPELLING SYSTEM

# WEEKLY TEST RESOURCES



Everything you  
need to administer  
your end of week  
test.

# Testing Lists

This page provides three different word lists to test pupils on at the end of the week. Option 1 could be considered an easier list of spellings, whereas option 3 would be considered a more complex list of spellings based on the specific rule and the word bank words provided.

This may support delivering a differentiated test if needed.

This page takes the work out of selecting words for the test.

Word List Option 1
observant
hesitant
tolerance
decent
frequency
obedient
hesitancy
innocent
tolerant
confident

Word List Option 2
confidence
assistant
assistance
obedient
observant
hesitant
tolerance
decent
innocent
decency

Word List Option 3
decency
confident
expectant
decency
innocence
frequent
confidence
assistant
assistance
observance



Name			Date			
1.	2.	3.	4.	5.		
6.	7.	8.	9.	10.		

Name			Date			
1.	2.	3.	4.	5.		
6.	7.	8.	9.	10.		

Name			Date			
1.	2.	3.	4.	5.		
6.	7.	8.	9.	10.		

Name			Date			
1.	2.	3.	4.	5.		
6.	7.	8.	9.	10.		

Name			Date			
1.	2.	3.	4.	5.		
6.	7.	8.	9.	10.		

Name:
1.
2.
3.
4.
5.
6.
7.
8.
9.
10.
Total Score:    _____/ 10

Name:
1.
2.
3.
4.
5.
6.
7.
8.
9.
10.
Total Score:    _____/ 10

Name:
1.
2.
3.
4.
5.
6.
7.
8.
9.
10.
Total Score:    _____/ 10

Name:
1.
2.
3.
4.
5.
6.
7.
8.
9.
10.
Total Score:    _____/ 10

# Half-Termly 20 Question Review Test Template

Name:
1.
2.
3.
4.
5.
6.
7.
8.
9.
10.
11.
12.
13.
14.
15.
16.
17.
18.
19.
20.
Total Score: ____/20

Name:
1.
2.
3.
4.
5.
6.
7.
8.
9.
10.
11.
12.
13.
14.
15.
16.
17.
18.
19.
20.
Total Score: ____/20

# WHOLE SCHOOL SPELLING SYSTEM

# CERTIFICATES



Quick and easy  
certificates and  
slips to print and  
give to pupils.

# 100% Spellings



**Congratulations on scoring full marks on this week's spellings.**

Signed

Date:

# 100% Spellings



**Congratulations on scoring full marks on this week's spellings.**

Signed

Date:

# 100% Spellings



**Congratulations on scoring full marks on this week's spellings.**

Signed

Date:

# 100% Spellings



**Congratulations on scoring full marks on this week's spellings.**

Signed:

Date:

# 100% Spellings



**Congratulations on scoring full marks on this week's spellings.**

Signed:

Date:

# 100% Spellings



**Congratulations on scoring full marks on this week's spellings.**

Signed:

Date:



## This Week's Spelling Score

Great effort this week! Everyone in school continues to be proud of all your efforts!



## This Week's Spelling Score

Great effort this week! Everyone in school continues to be proud of all your efforts!



## This Week's Spelling Score

Great effort this week! Everyone in school continues to be proud of all your efforts!



## This Week's Spelling Score

Great effort this week! Everyone in school continues to be proud of all your efforts!

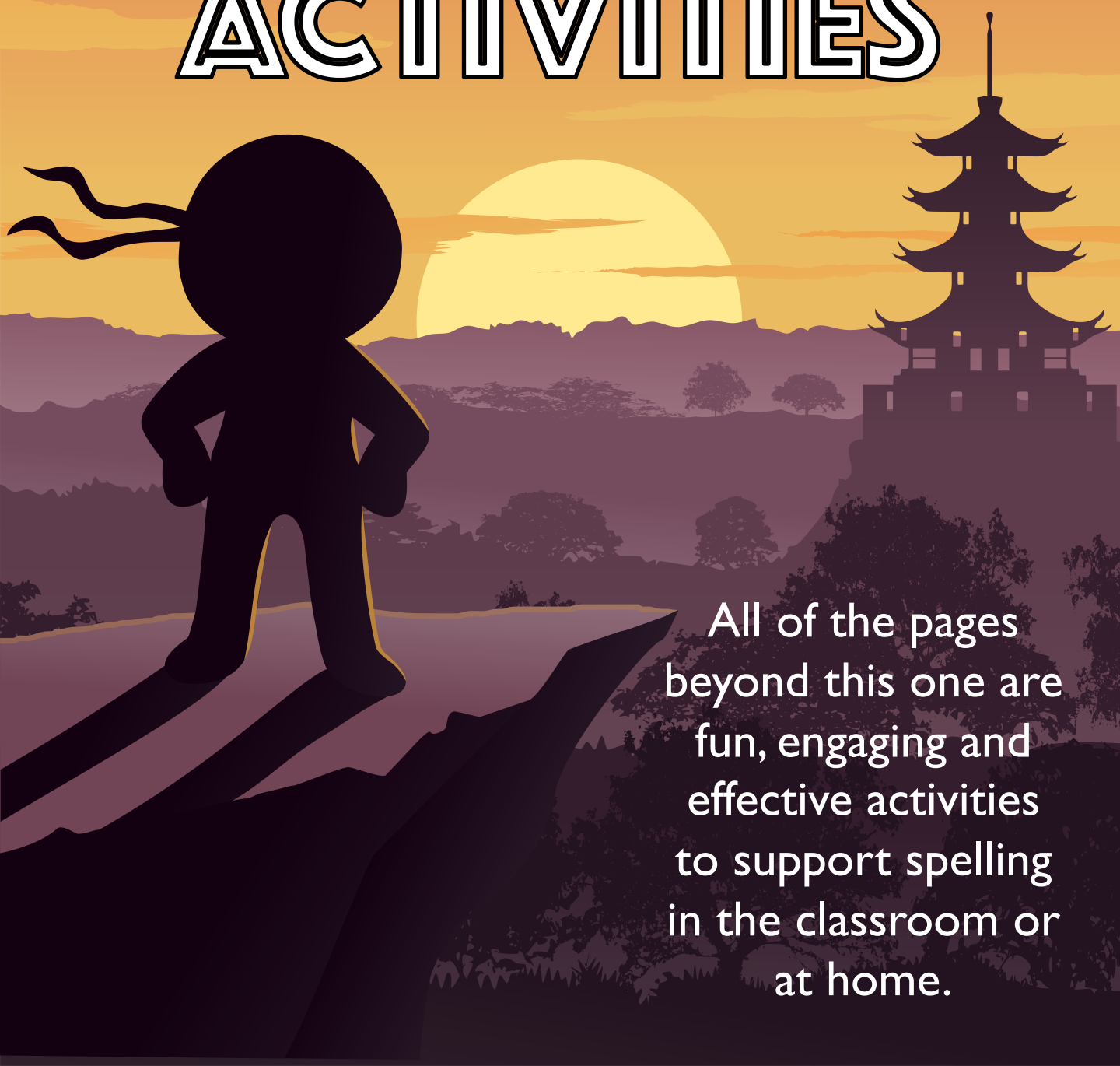


## This Week's Spelling Score

Great effort this week! Everyone in school continues to be proud of all your efforts!

# WHOLE SCHOOL SPELLING SYSTEM

# ADDITIONAL ACTIVITIES

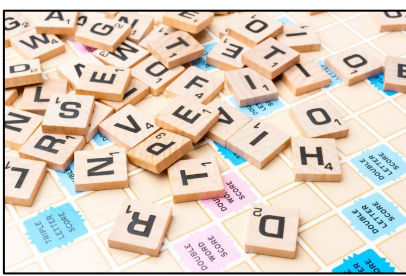


All of the pages  
beyond this one are  
fun, engaging and  
effective activities  
to support spelling  
in the classroom or  
at home.



# Ideas and Strategies to use at Home

With very little effort, you can provide some really engaging and memorable spelling activities at home.



Use Scrabble letters to spell out words.



Create a collection of rocks with the alphabet painted on them to spell with.



Use a tray of sand to mark spellings in it.



A spurt of shaving cream spread out, then get spelling.



Use magnetic or plastic letters as a practical spelling resource.



Why not act out your spellings or give each word a memorable action.



Write the spellings out in alphabetical order.



Write the spellings on coloured notes, then stick them around the house. Spell when you see.



Use a printable paper keyboard to type spellings and practise your keyboard skills. Or use a computer to type spellings.



Get creative, use paints to write the spellings on some old wallpaper!



Grab some chalks and get outside in the fresh air! Mark the ground and spell!



Why not use your spellings to create a funny and interesting story!

# Spelling Pyramids Activity

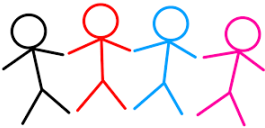
Spell your word in pyramid. Start with the first letter at the top, then the first and second underneath, then the first, second and third underneath, and so on.



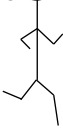
**c**  
**c a**  
**c a r**  
**c a r t**

# Stickman Spelling Activity

Write out your spellings and add stickmen to the word where possible.



football



# Word Jumble Activity

Have your spellings at the ready.  
When you are asked to spell the  
word, simply tap each letter from  
the jumbled alphabet below,

F

N

G

T

R

X

U

H

J

Q

D

M

C

W

L

Y

H

P

B

S

V

A

E

K

Z

O

# Word Jumble Activity

Have your spellings at the ready.  
When you are asked to spell the  
word, simply tap each letter from  
the jumbled alphabet below,

f

n

g

t

r

x

u

h

j

q

d

m

c

w

l

y

h

p

b

s

v

a

e

k

z

o

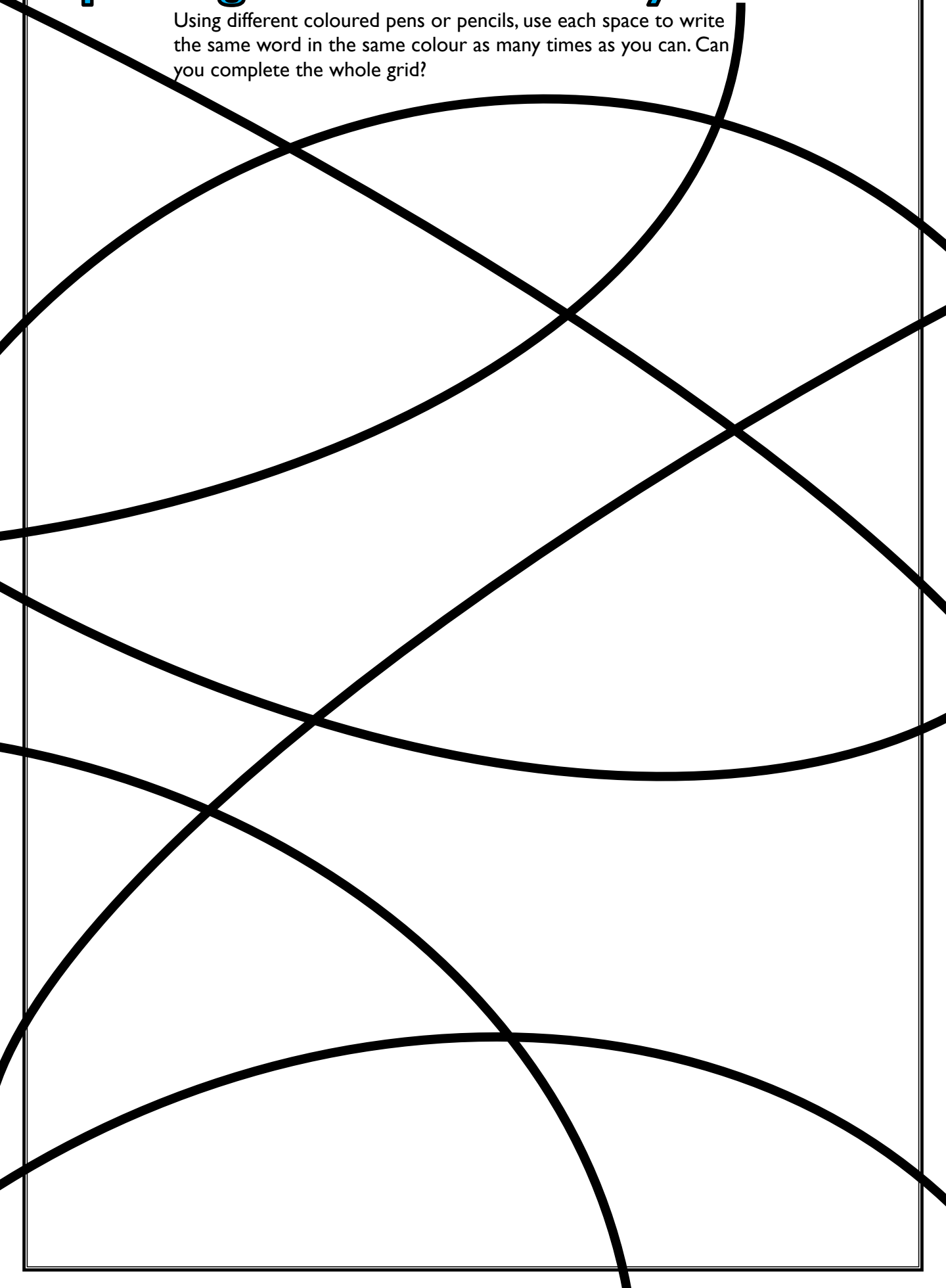
# Spelling Sentences Activity

Write the word and draw a picture.

[illegible]

# Spelling Scribble Activity

Using different coloured pens or pencils, use each space to write the same word in the same colour as many times as you can. Can you complete the whole grid?



# Spelling Grid Activity

Using different coloured pens or pencils, use each space to write the same word in the same colour as many times as you can. Can you complete the whole grid?

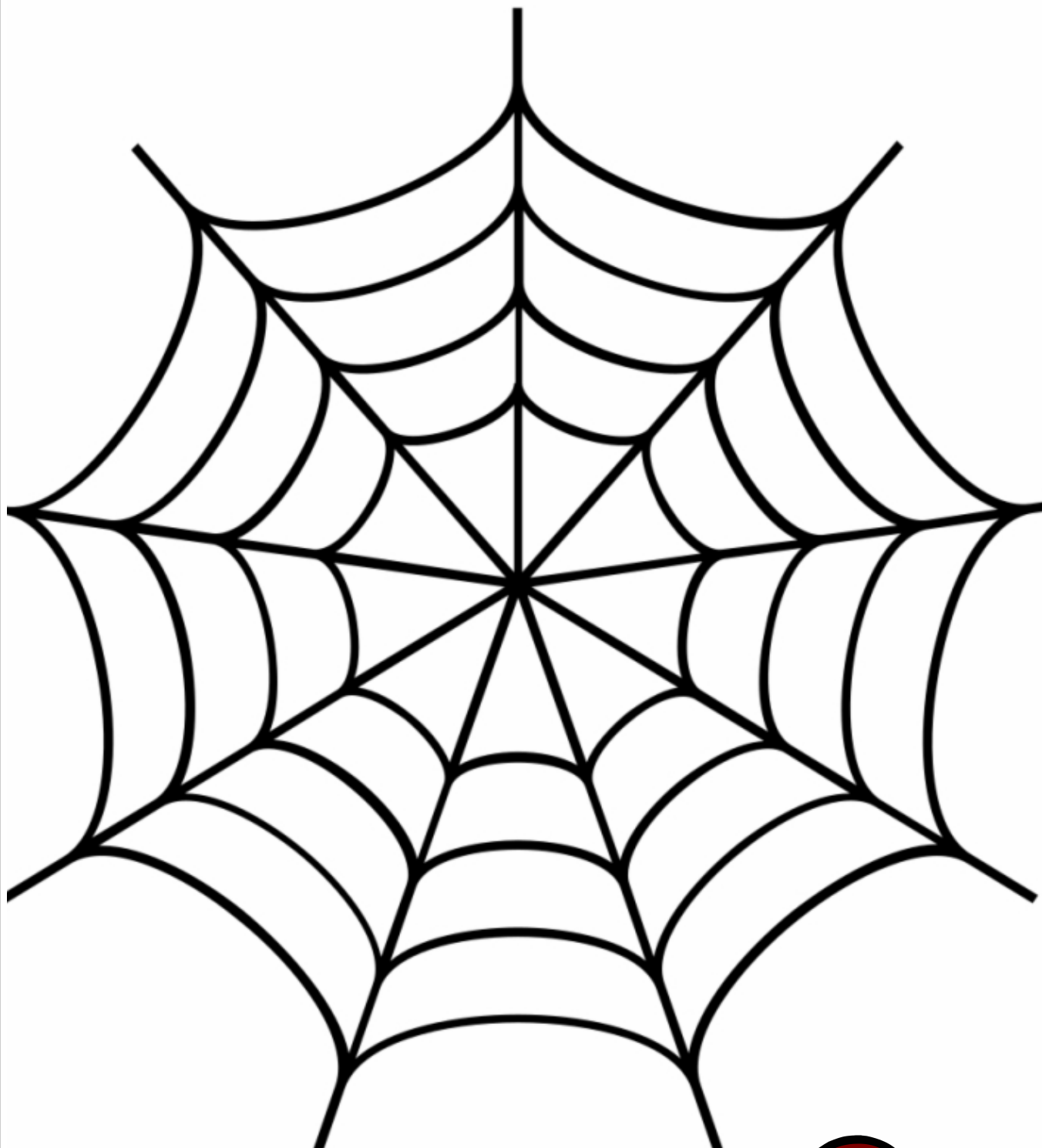



# Spelling Crossword Activity

Plot your words in the space below so that your words overlap, very much like in the game Scrabble.

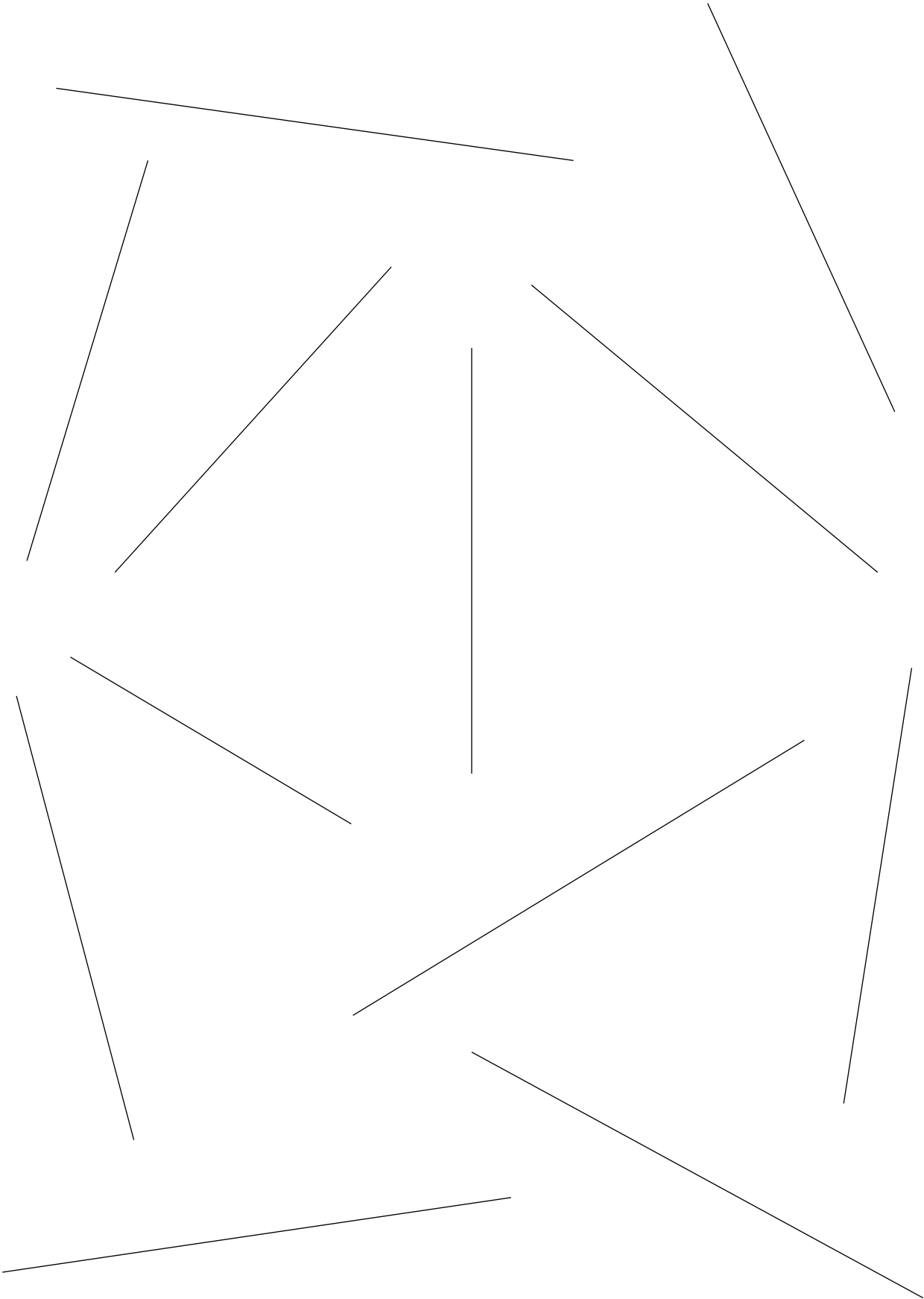
# Spelling Word Web Activity

Choose a word from your spelling list and then choose a segment of the web, then write your words in the same colour, becoming smaller and smaller as you get closer to the centre.



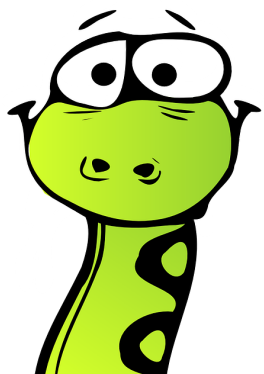
# Symmetry Spelling Activity

Write your word on one side of the line, then flip it and write the mirror image of the word on the other side of the line. Practise spelling and symmetry.



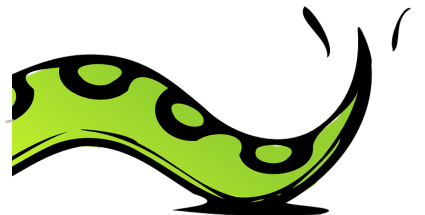
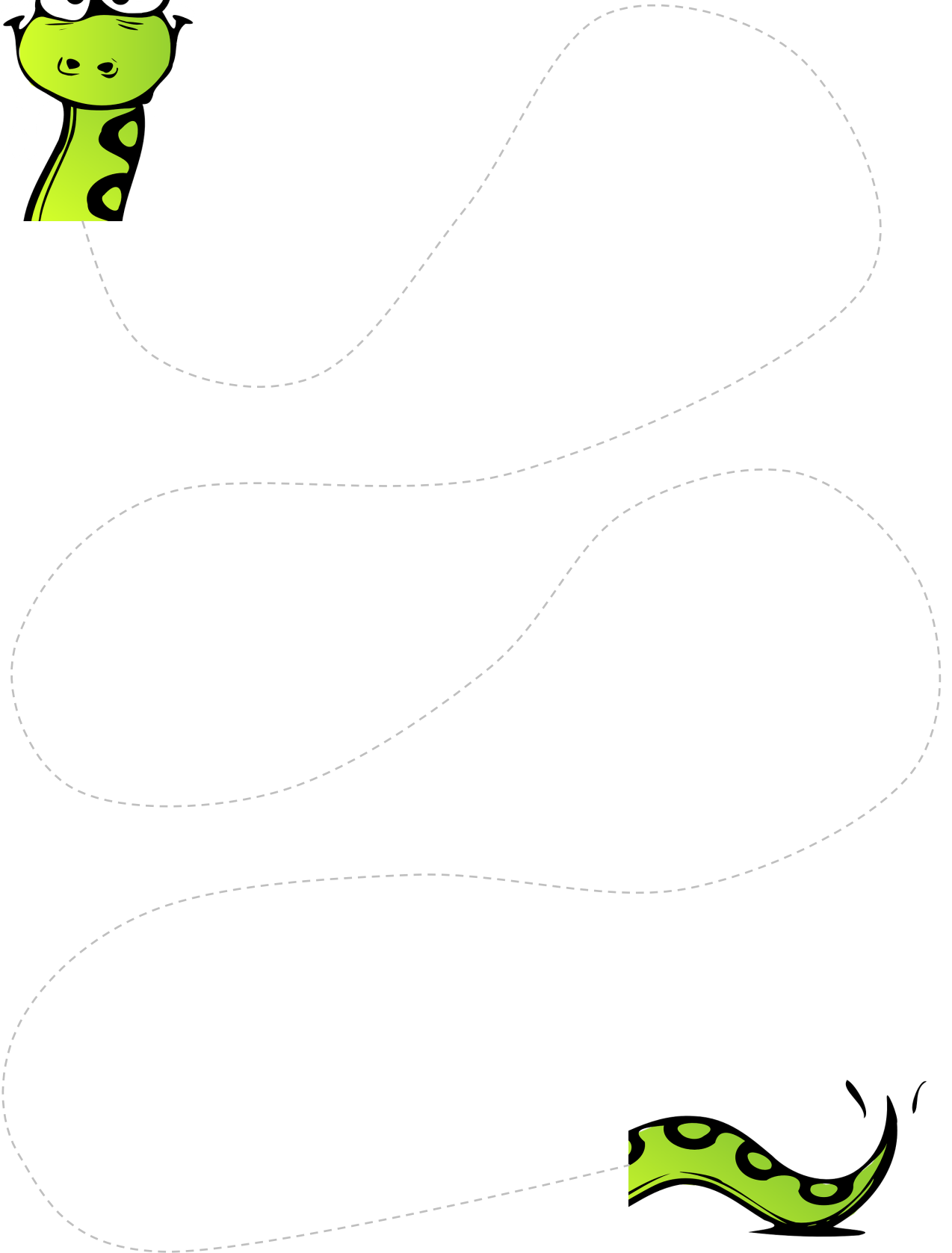
# Spelling Snake Activity

Complete the body of the snake by writing one word after another in a curved snake body fashion. Use different colours, repeat words if you need to and try to finish at the tail!



# Spelling Snake Activity

Complete the body of the snake by writing one word after another in a curved snake body fashion. Use different colours, repeat words if you need to and try to finish at the tail! Use the dashed lined to guide you all the way to the end.



# Grid Speller Activity

Use the grid to spell each word, one letter at a time. Clearly separate each spelling so you understand how it is built.

[illegible]

# Grid Speller Activity

Use the grid to spell each word, one letter at a time. Clearly separate each spelling so you understand how it is built.

[illegible]

# Rhyme Time Activity

Write one of your spelling words in a circle, then write as many other words that rhyme with it in the same circle.

The worksheet contains ten empty circles of different sizes, arranged in a scattered pattern. These circles are intended for students to write a spelling word and then list other words that rhyme with it. The circles are distributed across the page, with some being larger than others, providing space for creative word association.



# Rhyme Time Activity

Write one of your spelling words in a circle, then write as many other words that rhyme with it in the same circle.

The worksheet contains ten dashed circles of various sizes and orientations, arranged in a cluster. The circles are intended for a writing activity where students write a spelling word in one circle and then write other words that rhyme with it in the same circle. The circles are distributed across the page, with some overlapping and others separate.

# Rhyme Time Activity

Write one of your spelling words in a circle, then write as many other words that rhyme with it in the same circle.

The worksheet contains ten dashed circles of various sizes and orientations, intended for a rhyme activity. The circles are arranged as follows: a large circle in the top right; a large circle in the top left; a medium circle in the center; a small horizontal oval on the middle left; a large circle in the bottom left; a large circle in the bottom right; a small vertical oval in the bottom center; and two medium circles on the right side, one above the other, overlapping the large circle in the top right.

# Small and Smaller Activity

Fill in the grid with your spellings. Choose one word and repeat it in the outside rectangle. Then choose another word and fill in the next rectangle. Continue on to the centre.

A series of seven concentric rectangles, each centered within the other. The rectangles decrease in size from the outermost to the innermost, creating a tunnel-like effect. The rectangles are defined by thin black lines on a white background. The outermost rectangle is the largest, and the innermost is the smallest, consisting of a single vertical bar.

# Small and Smaller Activity

Fill in the grid with your spellings. Choose one word and repeat it in the outside rectangle. Then choose another word and fill in the next rectangle. Continue on to the centre.

A series of seven concentric rectangles, each centered on the page. The rectangles decrease in size from the outermost to the innermost. The outermost rectangle is the largest, and the innermost is the smallest, creating a tunnel-like effect towards the center. The rectangles are drawn with thin black lines on a white background.

# VOCABULARY NINJA

## WHOLE SCHOOL SPELLING SYSTEM

### YEAR 2

### AUTUMN TERM 2 – WEEK 2



Spelling Rule

The /or/ sound  
spelt a before l and  
ll

# WHOLE SCHOOL SPELLING SYSTEM

## INSTRUCTIONS FOR USING THIS PACK:

This pack contains everything you need to effectively teach, learn, practise and test a given spelling rule. The pack contains resources to send home at the beginning of the week, resources to display and use in the classroom, resources to send home, resources to play with and learn the spellings, and resources to test pupils knowledge of a spelling rule.

**Weekly Spelling Rule** - Page 3 and 4 introduce a spelling rule, gives a clear explanation of the rule and provides a spelling bank of up to 18 - 20 words where the spelling rule can be applied. This sheet should be used to introduce the spelling rule and then sent home to support parents at home.

**Look, Write, Cover and Check** - Pages 6, 7 and 8 are you classic look, cover, write and check spelling activities. This have been provided in many variations to help you keep spelling fresh and engaging in the class and at home. These resources can be printed.

**Printable Cards** - Pages 10-11 offer the spellings for the week as printable cards which can be used in the classroom or sent home for pupils to use as part of their learning of spellings at home. This sheet could also be trimmed along the line and then used as quick and simple flash cards.

**Display Words** - Pages 13-15 have each of the words from the spelling bank pre-populated so that you can quickly print the whole set of words and display them effectively within you classroom. This is a great resource and allows you to effectively and efficiently reference your spellings throughout the week.

**Weekly Test Resources** - Pages 18-21 has all of the resources you need to deliver the test at the end of the week including a variety of answer sheets and even differentiated lists of words to test pupils on which increase in difficulty.

**Certificates** – Pages 23 and 24 contains some really simple and slips that can be used to incentivise and reward pupils for their efforts and achievements.

**Additional Resources Section** – This section is standard in each pack and provides a multitude of different printable activities that you could give to pupils in your care. Each activity is simple to administer and helps keep the spelling routine in your class on a Tuesday, Wednesday an Thursday fresh and purposeful!

Suggested Weekly Spelling Routine	
Monday	Introduce and teach specific spelling rule. Send page 3 home and any other supporting resources. Display spellings in classroom
Tuesday	Spelling activity 5-15 minutes.
Wednesday	Spelling activity 5-15 minutes
Thursday	Spelling activity 5-15 minutes.
Friday	Test specific spelling rule with 10 questions from bank of 18

# Year 2 – Autumn Term 2 – Week 2

Insert  
school  
logo  
here

Spelling Rule / Weekly Focus – Statutory Words 1-20

The /or/ sound spelt a before l and ll  
The /ɔ:/ sound spelt a before l and ll

The /ɔ:/ sound (‘or’) is usually spelt as a before l and ll.

all	ball	call
walk	talk	always
small	tall	fall
hall	wall	stall
also	almost	always
although	stalk	altogether

# Year 2 – Autumn Term 2 – Week 2

Insert  
school  
logo  
here

Spelling Rule / Weekly Focus – Statutory Words 1-20

The /or/ sound spelt a before l and ll  
The /ɔ:/ sound spelt a before l and ll

The /ɔ:/ sound ('or') is usually spelt as a before l and ll.

all	ball	call	although
walk	talk	always	stalk
small	tall	fall	altogether
hall	wall	stall	alter
also	almost	always	called



# WHOLE SCHOOL SPELLING SYSTEM

## LOOK, COVER, WRITE AND CHECK



Variations of the  
classic look, cover,  
write and check  
method of practising  
spellings.

Focus Word	Write 1	Write 2	Write 3
all			
walk			
small			
hall			
also			
ball			
talk			
tall			
wall			
almost			
call			
always			
fall			
stall			
always			
although			
stalk			
altogether			

Focus Word	CAPITALS	Colours	BUBBLE WRITING
all			
walk			
small			
hall			
also			
ball			
talk			
tall			
wall			
almost			
call			
always			
fall			
stall			
always			
although			
stalk			
altogether			

Focus Word	small	large	mixed
all			
walk			
small			
hall			
also			
ball			
talk			
tall			
wall			
almost			
call			
always			
fall			
stall			
always			
although			
stalk			
altogether			

# WHOLE SCHOOL SPELLING SYSTEM

# PRINTABLE CARDS



All of this weeks  
spellings, ready to print  
to use as part of games  
in the classroom or  
send home.

**all**

**ball**

**walk**

**talk**

**small**

**tall**

**hall**

**wall**

**also**

**almost**

**always**

**called**

**call**

**although**

**always**

**stalk**

**fall**

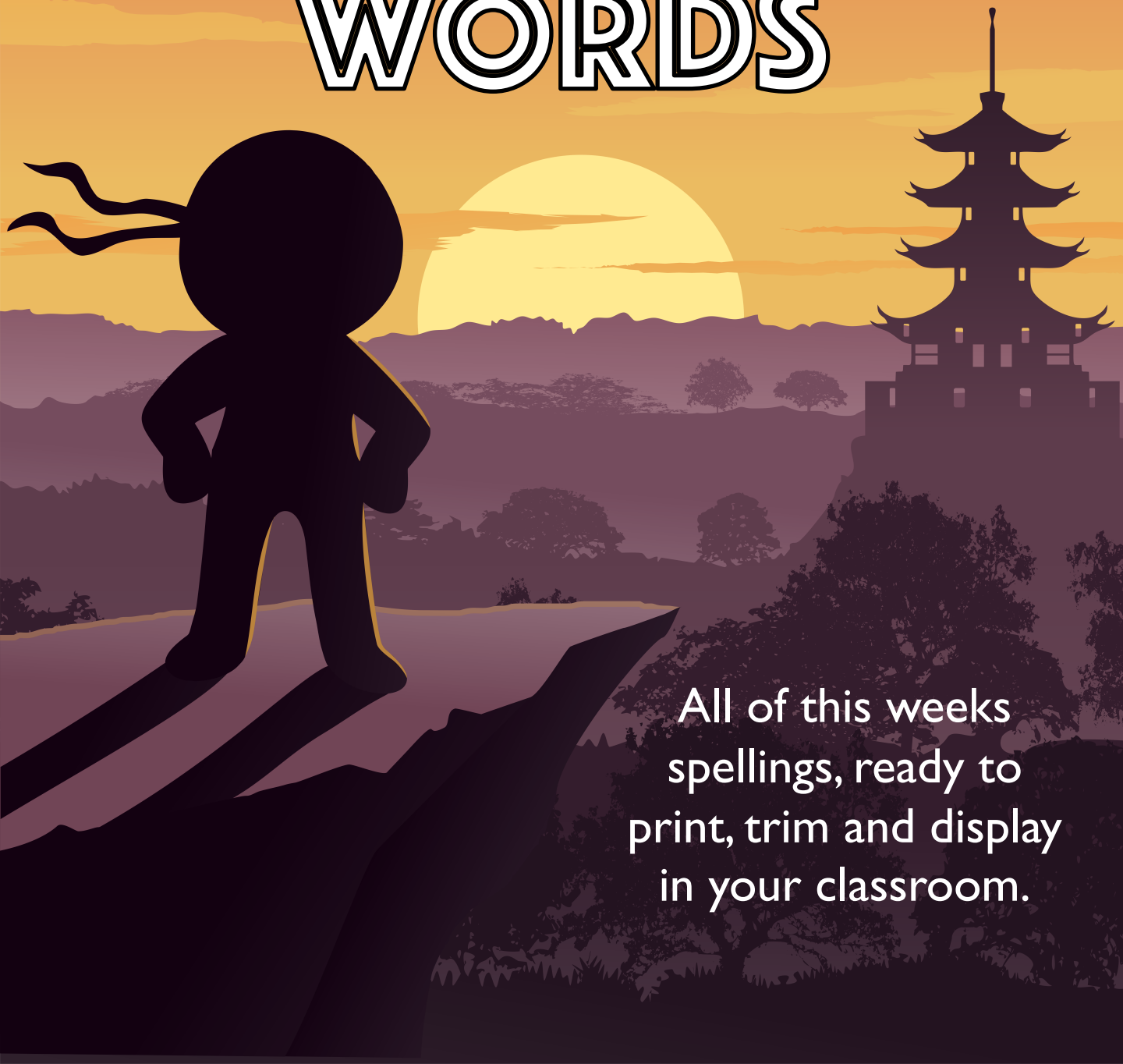
**altogether**

**stall**

**alter**

# WHOLE SCHOOL SPELLING SYSTEM

# DISPLAY WORDS



All of this weeks  
spellings, ready to  
print, trim and display  
in your classroom.



**all**

**walk**

**small**

**hall**

**also**

**ball**

**talk**

**tall**

**wall**

**almost**

**call**

**always**

**fall**

**stall**

**always**

**al**though

st**al**k

**al**together

**al**ter

ca**ll**ed

# WHOLE SCHOOL SPELLING SYSTEM

# WEEKLY TEST RESOURCES



Everything you  
need to administer  
your end of week  
test.

# Testing Lists

This page provides three different word lists to test pupils on at the end of the week. Option 1 could be considered an easier list of spellings, whereas option 3 would be considered a more complex list of spellings based on the specific rule and the word bank words provided.

This may support delivering a differentiated test if needed.

This page takes the work out of selecting words for the test.

Word List Option 1
all
walk
small
hall
also
ball
talk
tall
wall
always

Word List Option 2
all
walk
small
hall
also
call
always
fall
stall
always

Word List Option 3
although
stalk
altogether
alter
called
ball
talk
tall
wall
almost

Name			Date			
1.	2.	3.	4.	5.		
6.	7.	8.	9.	10.		

Name			Date			
1.	2.	3.	4.	5.		
6.	7.	8.	9.	10.		

Name			Date			
1.	2.	3.	4.	5.		
6.	7.	8.	9.	10.		

Name			Date			
1.	2.	3.	4.	5.		
6.	7.	8.	9.	10.		

Name			Date			
1.	2.	3.	4.	5.		
6.	7.	8.	9.	10.		

Name:
1.
2.
3.
4.
5.
6.
7.
8.
9.
10.
Total Score:    _____/ 10

Name:
1.
2.
3.
4.
5.
6.
7.
8.
9.
10.
Total Score:    _____/ 10

Name:
1.
2.
3.
4.
5.
6.
7.
8.
9.
10.
Total Score:    _____/ 10

Name:
1.
2.
3.
4.
5.
6.
7.
8.
9.
10.
Total Score:    _____/ 10



# Half-Termly 20 Question Review Test Template

Name:
1.
2.
3.
4.
5.
6.
7.
8.
9.
10.
11.
12.
13.
14.
15.
16.
17.
18.
19.
20.
Total Score: ____/20

Name:
1.
2.
3.
4.
5.
6.
7.
8.
9.
10.
11.
12.
13.
14.
15.
16.
17.
18.
19.
20.
Total Score: ____/20

# WHOLE SCHOOL SPELLING SYSTEM

# CERTIFICATES



Quick and easy  
certificates and  
slips to print and  
give to pupils.

# 100% Spellings



**Congratulations on scoring full marks on this week's spellings.**

Signed

Date:

# 100% Spellings



**Congratulations on scoring full marks on this week's spellings.**

Signed

Date:

# 100% Spellings



**Congratulations on scoring full marks on this week's spellings.**

Signed

Date:

# 100% Spellings



**Congratulations on scoring full marks on this week's spellings.**

Signed:

Date:

# 100% Spellings



**Congratulations on scoring full marks on this week's spellings.**

Signed:

Date:

# 100% Spellings



**Congratulations on scoring full marks on this week's spellings.**

Signed:

Date:



## This Week's Spelling Score

Great effort this week! Everyone in school continues to be proud of all your efforts!



## This Week's Spelling Score

Great effort this week! Everyone in school continues to be proud of all your efforts!



## This Week's Spelling Score

Great effort this week! Everyone in school continues to be proud of all your efforts!



## This Week's Spelling Score

Great effort this week! Everyone in school continues to be proud of all your efforts!

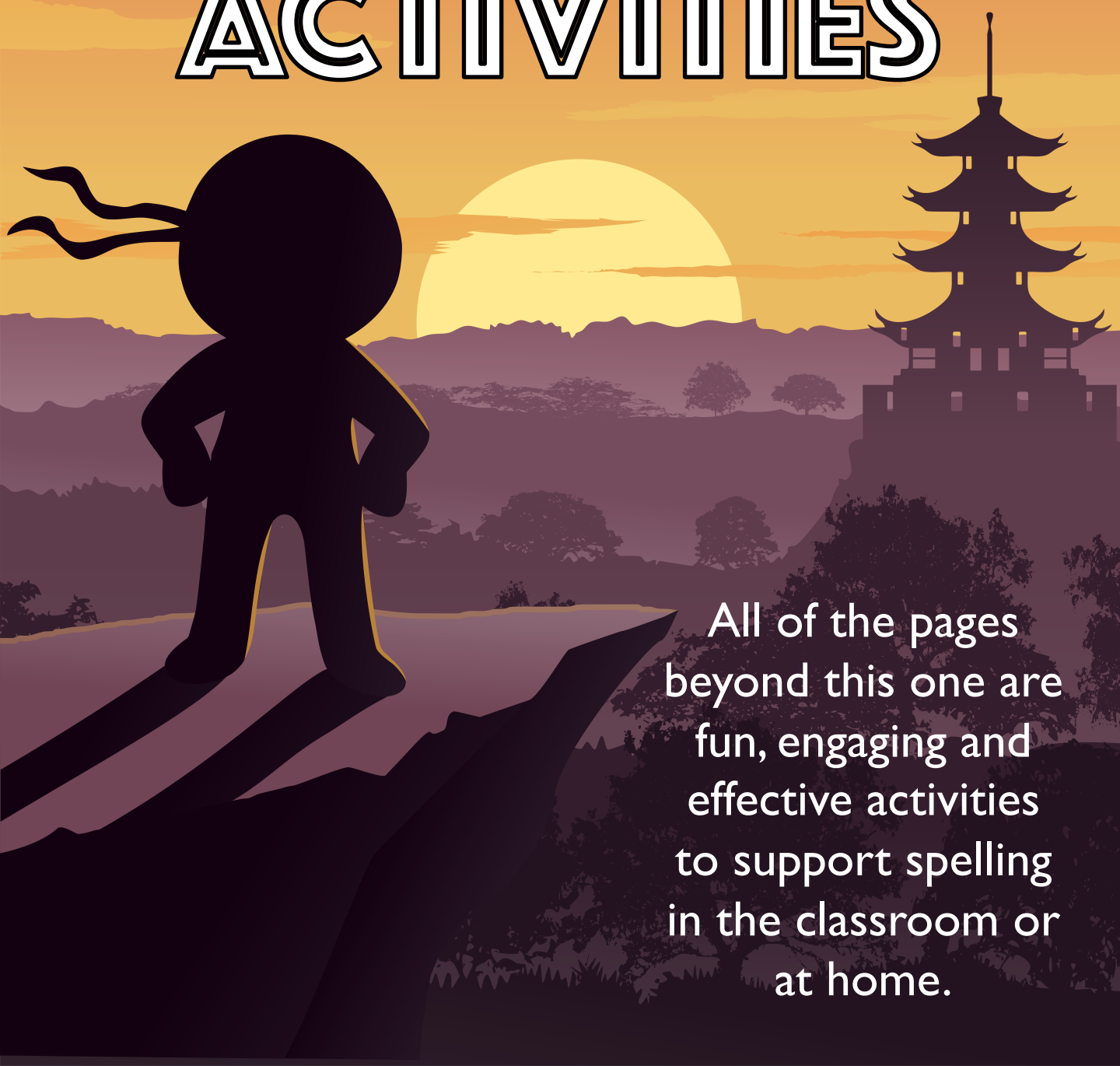


## This Week's Spelling Score

Great effort this week! Everyone in school continues to be proud of all your efforts!

# WHOLE SCHOOL SPELLING SYSTEM

# ADDITIONAL ACTIVITIES

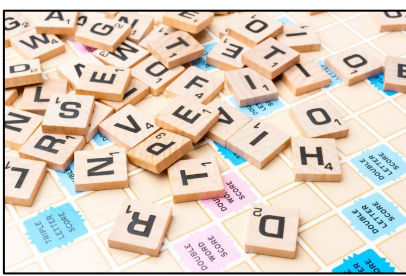


All of the pages  
beyond this one are  
fun, engaging and  
effective activities  
to support spelling  
in the classroom or  
at home.



# Ideas and Strategies to use at Home

With very little effort, you can provide some really engaging and memorable spelling activities at home.



Use Scrabble letters to spell out words.



Create a collection of rocks with the alphabet painted on them to spell with.



Use a tray of sand to mark spellings in it.



A spurt of shaving cream spread out, then get spelling.



Use magnetic or plastic letters as a practical spelling resource.



Why not act out your spellings or give each word a memorable action.



Write the spellings out in alphabetical order.



Write the spellings on coloured notes, then stick them around the house. Spell when you see.



Use a printable paper keyboard to type spellings and practise your keyboard skills. Or use a computer to type spellings.



Get creative, use paints to write the spellings on some old wallpaper!



Grab some chalks and get outside in the fresh air! Mark the ground and spell!



Why not use your spellings to create a funny and interesting story!

# Spelling Pyramids Activity

Spell your word in pyramid. Start with the first letter at the top, then the first and second underneath, then the first, second and third underneath, and so on.

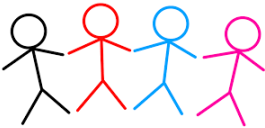


**c**  
**c a**  
**c a r**  
**c a r t**

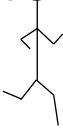


# Stickman Spelling Activity

Write out your spellings and add stickmen to the word where possible.



football



# Word Jumble Activity

Have your spellings at the ready.  
When you are asked to spell the  
word, simply tap each letter from  
the jumbled alphabet below,

F

N

G

T

R

X

U

H

J

Q

D

M

C

W

L

Y

H

P

B

S

V

A

E

K

Z

O

# Word Jumble Activity

Have your spellings at the ready.  
When you are asked to spell the  
word, simply tap each letter from  
the jumbled alphabet below,

f

n

g

t

r

x

u

h

j

q

d

m

c

w

l

y

h

p

b

s

v

a

e

k

z

o

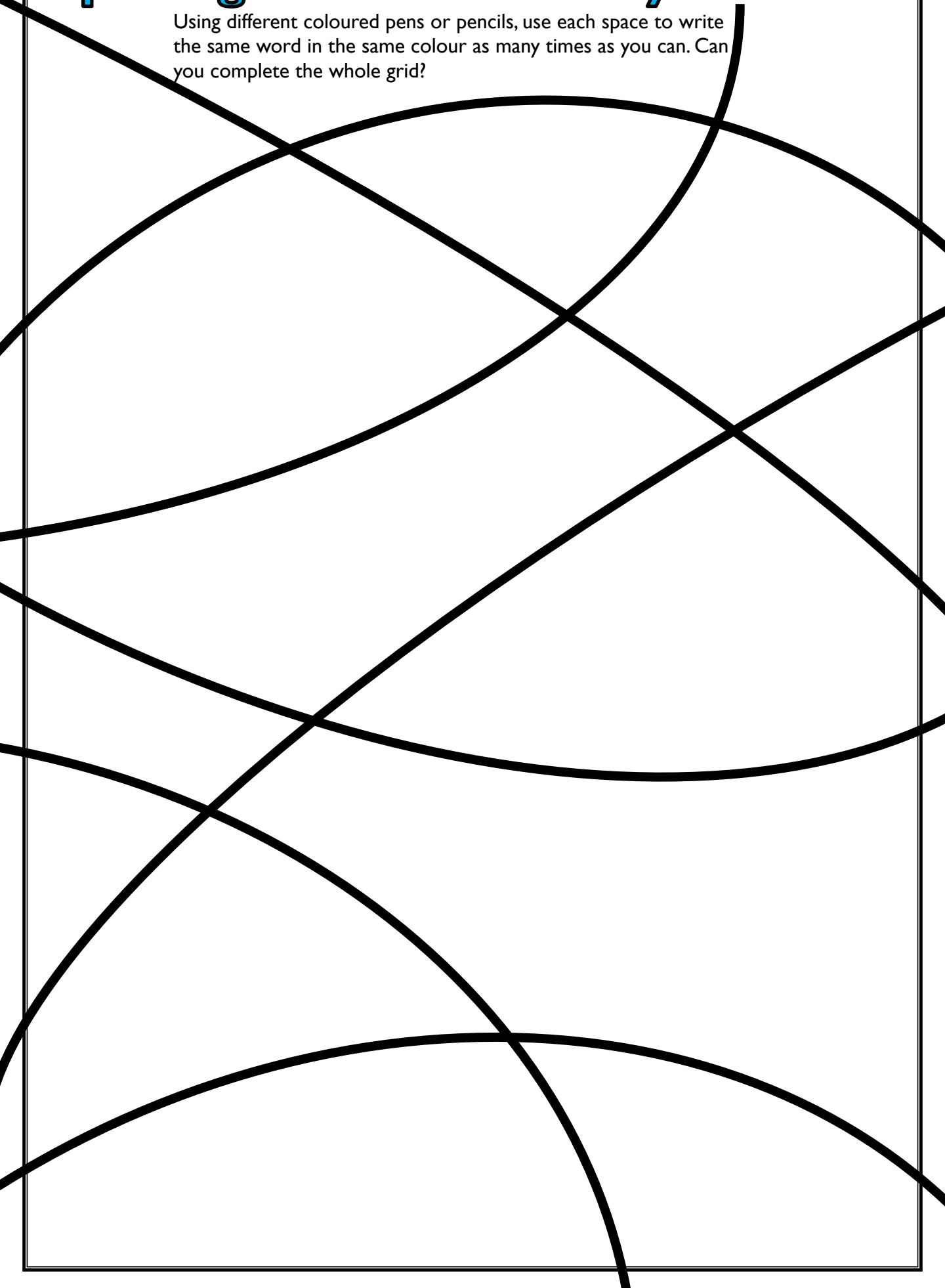
# Spelling Sentences Activity

Write the word and draw a picture.

[illegible]

# Spelling Scribble Activity

Using different coloured pens or pencils, use each space to write the same word in the same colour as many times as you can. Can you complete the whole grid?



# Spelling Grid Activity

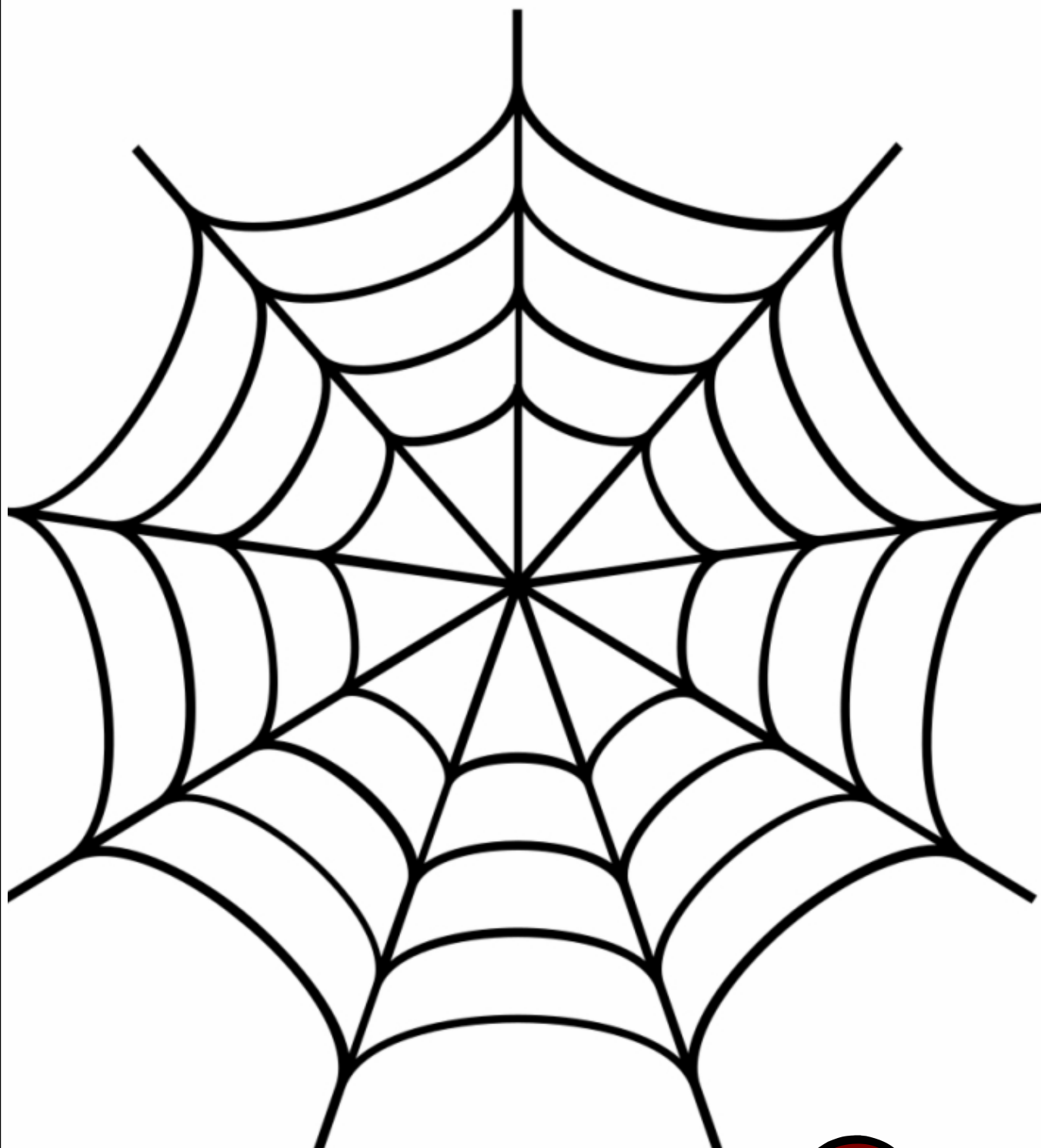
Using different coloured pens or pencils, use each space to write the same word in the same colour as many times as you can. Can you complete the whole grid?


# Spelling Crossword Activity

Plot your words in the space below so that your words overlap, very much like in the game Scrabble.

# Spelling Word Web Activity

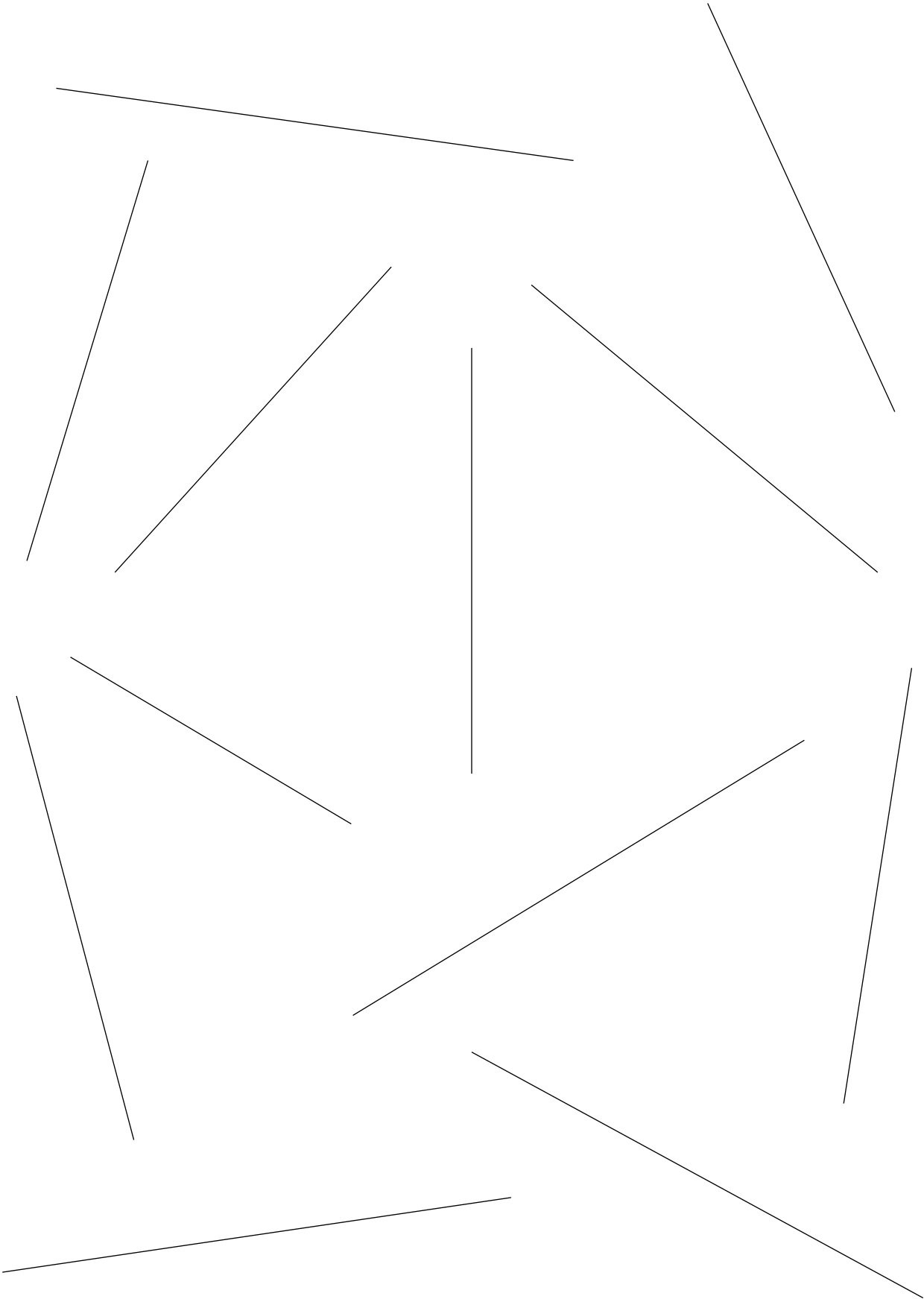
Choose a word from your spelling list and then choose a segment of the web, then write your words in the same colour, becoming smaller and smaller as you get closer to the centre.





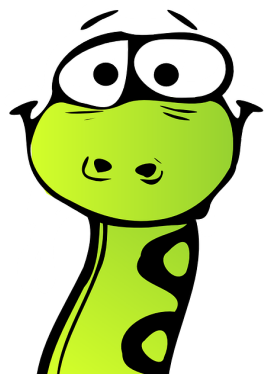
# Symmetry Spelling Activity

Write your word on one side of the line, then flip it and write the mirror image of the word on the other side of the line. Practise spelling and symmetry.



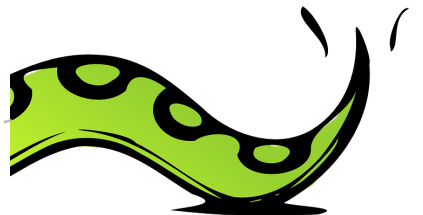
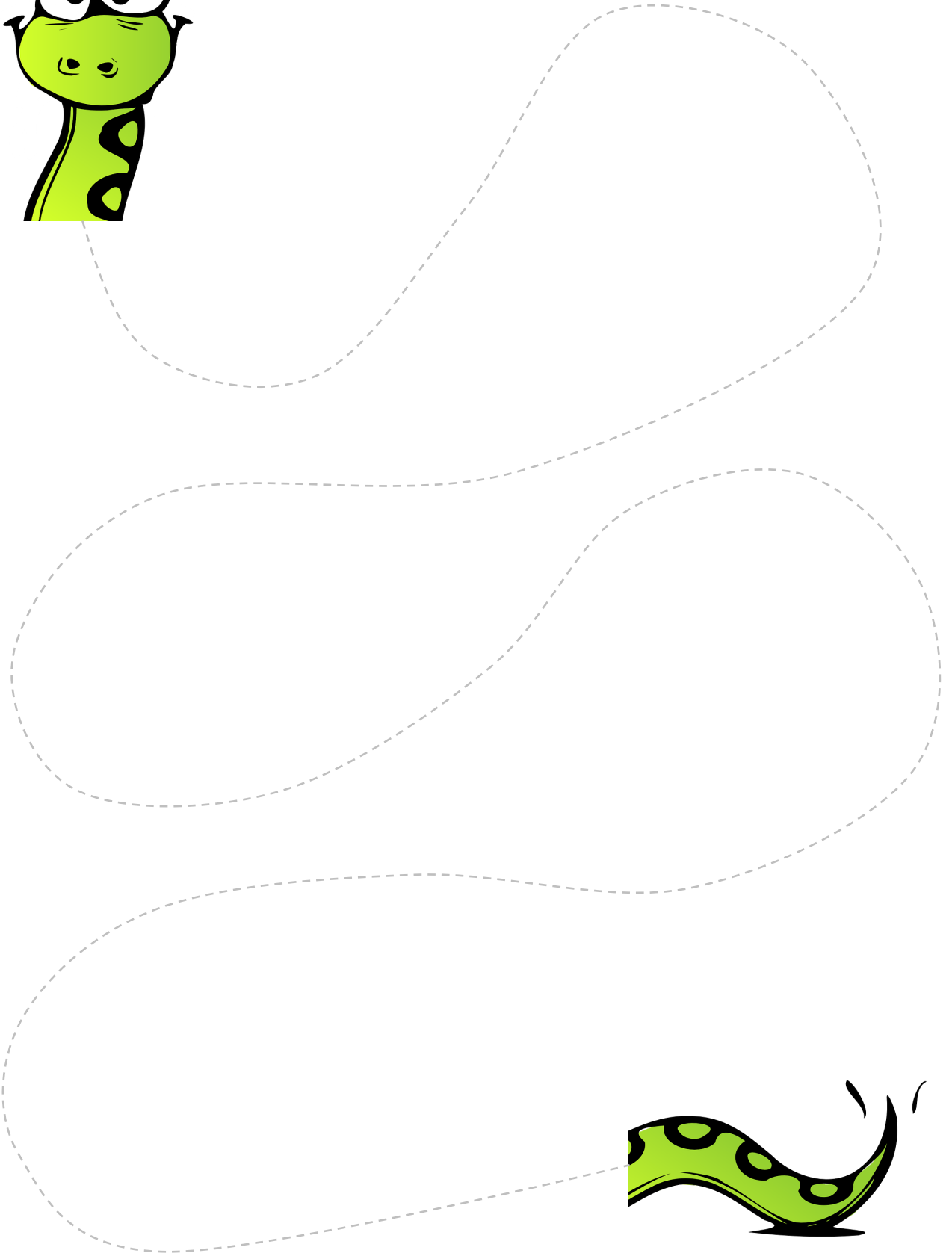
# Spelling Snake Activity

Complete the body of the snake by writing one word after another in a curved snake body fashion. Use different colours, repeat words if you need to and try to finish at the tail!



# Spelling Snake Activity

Complete the body of the snake by writing one word after another in a curved snake body fashion. Use different colours, repeat words if you need to and try to finish at the tail! Use the dashed lined to guide you all the way to the end.



# Grid Speller Activity

Use the grid to spell each word, one letter at a time. Clearly separate each spelling so you understand how it is built.

[illegible]

# Grid Speller Activity

Use the grid to spell each word, one letter at a time. Clearly separate each spelling so you understand how it is built.

[illegible]

# Rhyme Time Activity

Write one of your spelling words in a circle, then write as many other words that rhyme with it in the same circle.

The worksheet contains ten empty circles of different sizes, arranged in a scattered pattern. These circles are intended for students to write a spelling word and then list other words that rhyme with it. The circles are distributed across the page, with some being larger and others smaller, providing multiple opportunities for the activity.

# Rhyme Time Activity

Write one of your spelling words in a circle, then write as many other words that rhyme with it in the same circle.

The worksheet contains ten dashed circles of various sizes, arranged in a cluster. The circles are intended for a writing activity where students write a spelling word in one circle and then write other words that rhyme with it in the same circle. The circles are arranged in a way that some overlap, creating a dynamic layout for the activity. The circles are located in the upper and lower portions of the page, leaving space for the title and instructions at the top.

# Rhyme Time Activity

Write one of your spelling words in a circle, then write as many other words that rhyme with it in the same circle.

The worksheet contains ten dashed circles of various sizes arranged in a non-uniform pattern. The circles are intended for a writing activity where a student writes a spelling word in one circle and then lists other words that rhyme with it in the same circle. The circles are distributed across the page, with some overlapping and others separate. The largest circle is in the top right, and the smallest is in the middle right. The remaining circles are of various sizes and are scattered throughout the lower half of the page.



# Small and Smaller Activity

Fill in the grid with your spellings. Choose one word and repeat it in the outside rectangle. Then choose another word and fill in the next rectangle. Continue on to the centre.

A series of seven concentric rectangles, each centered within the other. The rectangles decrease in size from the outermost to the innermost, creating a tunnel-like effect. The rectangles are defined by thin black outlines on a white background. The outermost rectangle is the largest, and the innermost is the smallest, consisting of a single vertical bar.

# Small and Smaller Activity

Fill in the grid with your spellings. Choose one word and repeat it in the outside rectangle. Then choose another word and fill in the next rectangle. Continue on to the centre.

A series of seven concentric rectangles, each centered on the page. The rectangles decrease in size from the outermost to the innermost. The outermost rectangle is the largest, and the innermost is the smallest, creating a tunnel-like effect towards the center. The rectangles are drawn with thin black lines on a white background.